

EARTHQUAKES IN ALASKA SEPTEMBER 2001

ALASKA EARTHQUAKE INFORMATION CENTER



A report of the Alaska State Seismologist's Office



Alaska Earthquake Information Center

Geophysical Institute, University of Alaska
903 Koyukuk Drive, P.O. Box 757320
Fairbanks, AK 99775-7320
TEL: (907) 474-7320; FAX: (907) 474-5618
E-MAIL: aeic@giseis.alaska.edu

EARTHQUAKES IN ALASKA - September 2001

By

N. Ratchkovski¹, T. Cox¹, and R. Hansen¹

with the assistance of

E. Clark¹, B. Foshee¹, K. Lindquist¹, L. Rao¹, S. Stihler¹

January, 2002

The Alaska Earthquake Information Center is a cooperative program between the Geophysical Institute of the University of Alaska¹ and the U.S. Geological Survey with support from the Earthquake Hazards Program.

DISCLAIMER

This report has not been edited or reviewed for conformity with U. S. Geological Survey and State of Alaska standards and nomenclature. The data in this report are preliminary and subject to revision. Most of the earthquake parameters have been determined by AEIC. The data are released on the condition that neither the U.S. Geological Survey, nor the United States Government, nor the Geophysical Institute, University of Alaska-Fairbanks may be held liable for any damages resulting from its authorized or unauthorized use.

The Alaska Earthquake Information Center (AEIC) is a cooperative program established to monitor earthquakes in Alaska and to provide earthquake information to citizens and public officials and to the earth science community.

Most of the earthquakes located by AEIC occur in a “core” area in central and southern Alaska, between latitudes 57°N and 67°N, and longitudes 135°W and 156°W; however, this listing also includes earthquakes not located by AEIC but reported in the National Earthquake Information Center’s (NEIC) monthly Preliminary Determination of Epicenters (PDE) for a larger region between latitudes 48°N and 75°N, and longitudes 130°W to 170°E.

The magnitude level for completeness and the precision of the locations vary across the state due to uneven station spacing and to differences in earthquake depths. The data are more complete and the hypocenters are more accurate in regions where the station density is greatest. In southern and central Alaska where the majority of the stations are located, the earthquake catalogs are complete for shallow (depth < 30 km) earthquakes of about magnitude 1.8 and larger. The magnitude threshold at which the catalogs are complete increases with depth. For earthquakes deeper than 100 km in southern and central Alaska, the catalogs are complete above about magnitude 2.5. The earthquake catalogs are reasonably complete for the entire state for events greater than or equal to magnitude 4.5. Earthquakes in southern and central Alaska, where calculated hypocenters are more accurate, have horizontal (epicentral) and vertical (depth) errors (median value) of 1.1 and 1.9 km, respectively.

Neogene and younger faults plotted on the seismicity figures are modified from: Plafker, G., Gilpin, L., and Lahr, J.C., 1994, Neotectonic map of Alaska, in Plafker, G., and Berg, H.C., eds., The geology of Alaska: Boulder, Colorado, Geological Society of America, The Geology of North America, v. G-1, plate 12, scale 1:2,500,000.

The seismicity shown for western Canada is not complete, and does not represent the total activity for the area. For more information on Canadian seismicity, contact: Pacific Geoscience Center, Geological Survey of Canada, P.O. Box 6000 Sidney, British Columbia, V8L 4B2 CANADA.

Cover

Substantial ground movement resulting from the 1964 Good Friday Earthquake caused significant cracks in many Anchorage area roads.

Photo from the Geophysical Institute’s Alaska Earthquake Photo Archives.

Acknowledgments

Supplemental data provided by the United States Geological Survey, National Earthquake Information Center, Golden, Colorado; the Geological Survey of Canada, Pacific Geoscience Centre, Sidney, British Columbia; and the National Oceanic and Atmospheric Administration, National Weather Service, Alaska Tsunami Warning Center, Palmer, Alaska.

CONTENTS

This monthly earthquake catalog contains the following:

- Highlights:** A discussion of important or particularly interesting earthquakes which occurred during the month.
- Summary plot:** A plot with the earthquake statistics: time-magnitude plot, number of located events per day, cumulative number of located events, depth histogram, frequency-magnitude relationship for the shallow and deeper events.
- Maps and cross-sections:** Five maps illustrating Alaska seismicity during the month. Figure 1 is a map which includes all located earthquakes for the state and surrounding region. Figure 2a focuses on earthquakes in a “core” area of central and southern Alaska, and depicts line segments for two cross-sections through the Alaska/Aleutian Wadati Benioff zone (Figure 2b). Figure 3 shows events in the “core” area larger than magnitude 3.0, Figure 4 shows all “core” events shallower than 30 km depth, and Figure 5 shows all “core” events of depth greater than or equal to 30 km.
- Listings:** Three listings of hypocenters are presented, as follows: first, a complete listing of all located earthquakes for the month, corresponding to the epicenters plotted in Figure 1; next, Appendix 1 contains a subset of the full listing restricted to only those events of magnitude 4.0 and larger; and lastly, Appendix 2 lists known or suspected quarry blasts during the month. These blasts have been excluded from Figures 1 - 5. Listings include, for each event: date and origin time, epicenter, depth, preferred magnitude, solution quality statistics and comments (region, alternate magnitudes, available felt reports and other remarks).

Other types of information available regularly from AEIC:

Parameters for the most recent 100 earthquakes of magnitude 2.0 and larger are available through the Internet via finger `quake@giseis.alaska.edu` OR by sending email to `quake@giseis.alaska.edu`; in the latter case a return email message will contain the earthquake listing.

Weekly and Monthly Seismicity Reports - issued within seven days of the end of each week and month, respectively. These reports include highlights of recent activity, a preliminary listing of events, and epicenter maps. The weekly and monthly reports may be found on the Internet at <http://www.aeic.alaska.edu/>.

Alaska Earthquakes and AEIC Seismic Network Operations - annual reports listing only the larger events, but including a discussion of the recorded seismicity and more detailed information about instrumentation, data processing and velocity models.

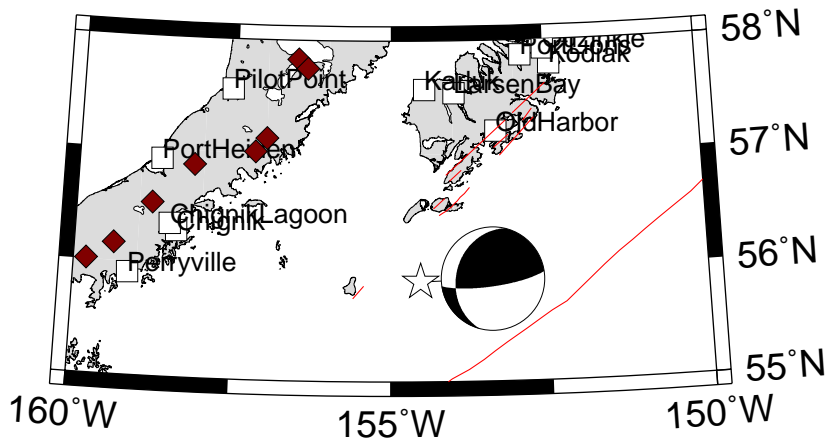
Catalog of Alaska Earthquake Focal Mechanisms - annual catalogs of focal mechanisms determined from initial P-wave polarities recorded by the regional seismograph network, as well as source mechanisms determined independently by NEIC and other seismic observatories.

HIGHLIGHTS

During September, 2001, the Alaska Earthquake Information Center located 653 earthquakes, 16 of which had magnitudes greater than 4.0 and four of which were felt. The largest event occurred on September 21 in the Fox Islands region of Alaska (5.5 M). Earthquakes of particular interest during the month are discussed below:

September 22, 6:48:05 UTC (September 21, 10:48 pm ADT), M_W 5.1 (M_S 4.6, m_b 4.9), 55.879°N, 154.531°W, depth=33 km (fixed)

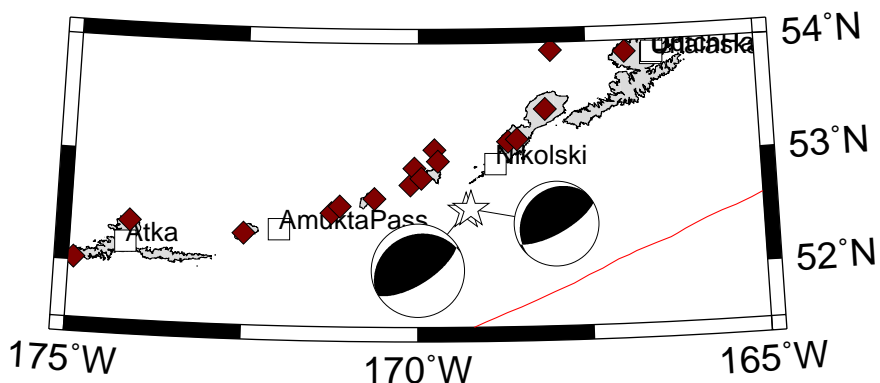
A moderate earthquake occurred south of Kodiak Island. It was located 249 km (154 miles) southwest of Kodiak and 188 km (117 miles) south of Larsen Bay. Focal mechanism indicates either thrusting on a west-dipping shallow plane or reverse faulting on an east-west nearly vertical plane. Compressional axis is aligned with the direction of the plate convergence, which might indicate that the earthquake occurred on the plate interface.



September 11, 21:10:57 UTC (1:10 pm ADT), M_W 5.1 (M_S 4.3, m_b 4.9), 52.541°N, 169.235°W, depth=21.62 km

September 12, 14:50:37 UTC (6:50 am ADT), M_W 5.6 (M_S 5.1, m_b 5.3), 52.525°N, 169.303°W, depth=33 km (fixed)

Two moderate earthquakes located in the Fox Islands region of the Aleutian Islands 54 km (33 miles) southwest of Nikolski and 184 km (114 miles) east of Amukta Pass. Harvard centroid moment tensor solutions indicate thrusting toward the north-west on a plane dipping slightly northward, consistent with the direction of the plate convergence. These events are located in the rupture zone of the 1957 M_W 8.6 event.



SUMMARY PLOT

A summary plot of events with magnitudes. The lower left panel shows number of the located events per day, their magnitudes, and the cumulative number. The upper left panel is the depth histogram. The right panel shows the frequency-magnitude distribution of the shallow (0-40 km, upper figure) and intermediate-depth (40-250 km, lower figure) earthquakes with estimates of the b-value and magnitude of completeness.

2001/9/1 – 2001/9/30: 629 earthquakes

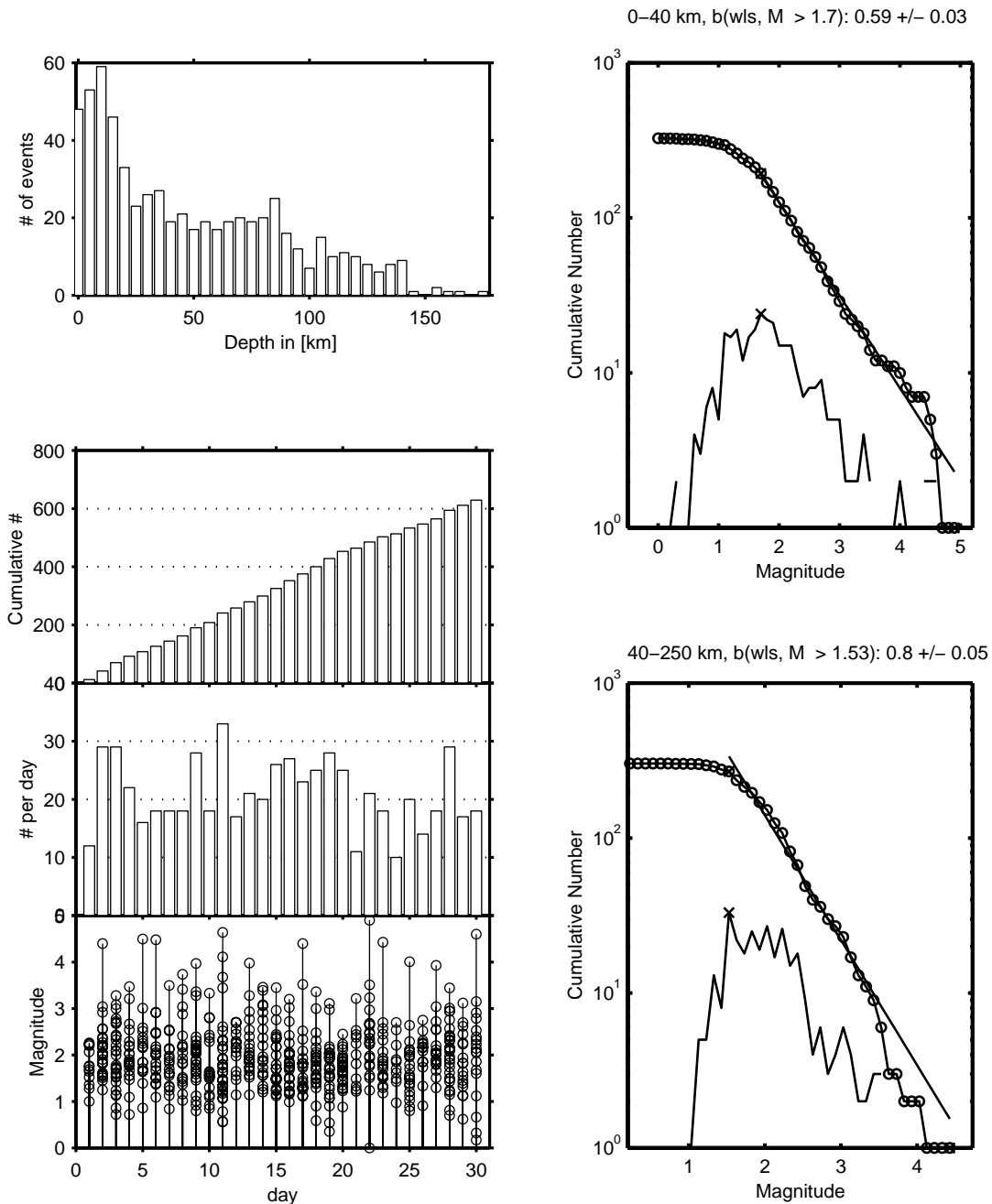
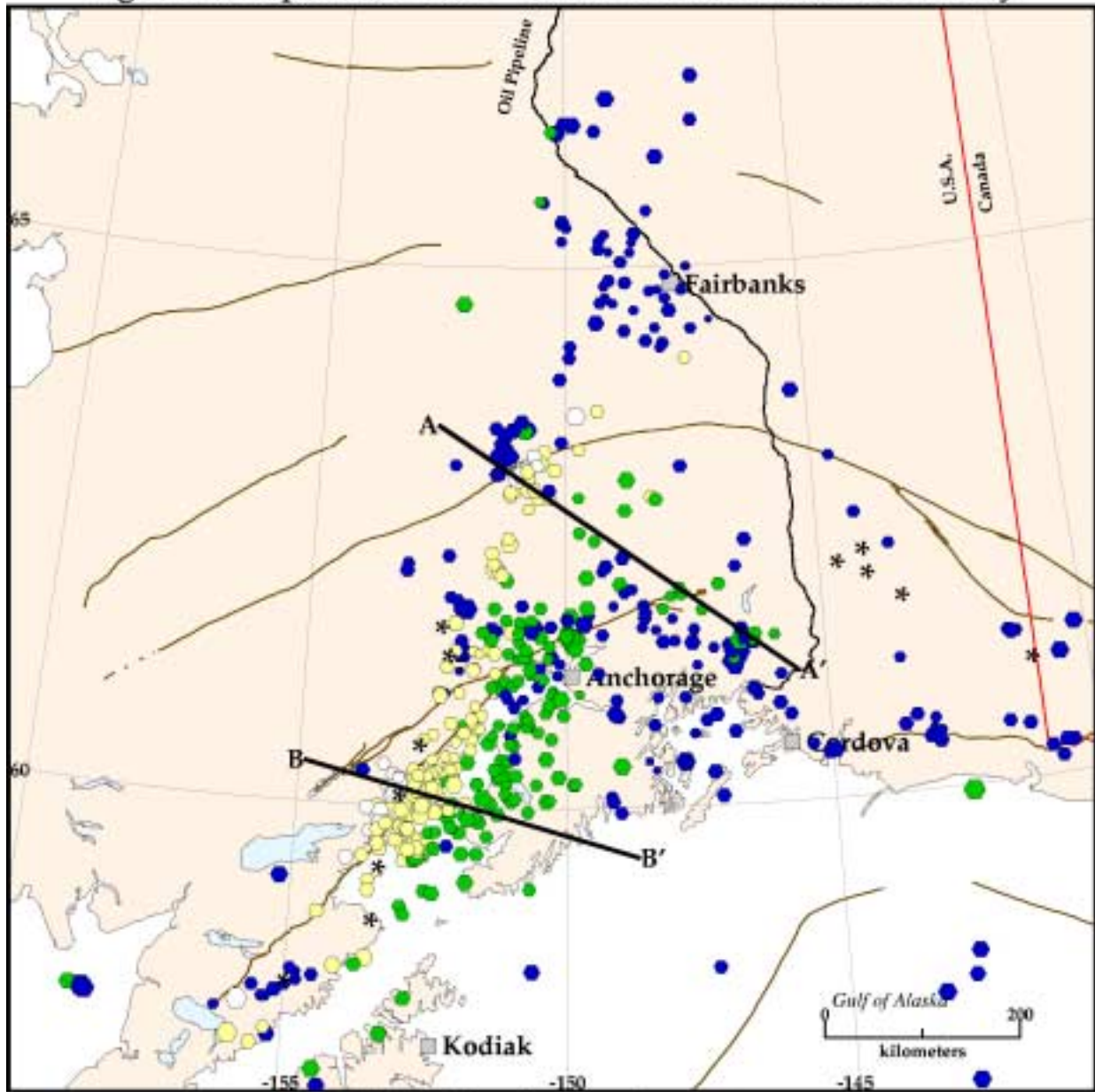


Figure 2a: September 2001 -- South Central Alaska Seismicity



608 events plotted

- Depth <= 30
- 30 < Depth <= 75
- 75 < Depth <= 125
- Depth > 125

Alaska Earthquake Information Center
 UAF Geophysical Institute
 U.S. Geological Survey

* Volcano

- No M
- M = 2.0
- M = 3.0
- M = 4.0
- M = 5.0

Figure 2b: September 2001 -- Cross-sections from Figure 2a

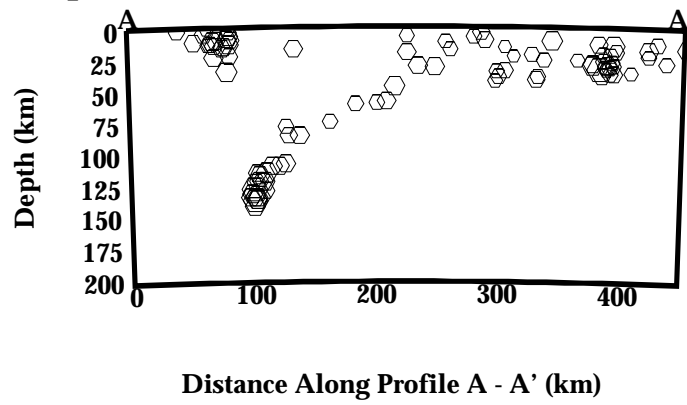


Figure 2b: September 2001 -- Cross-sections from Figure 2a

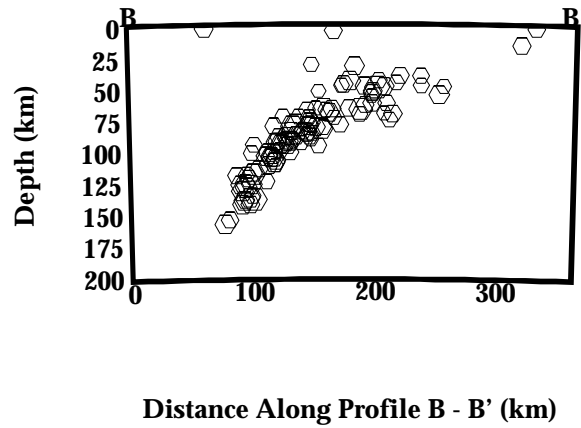
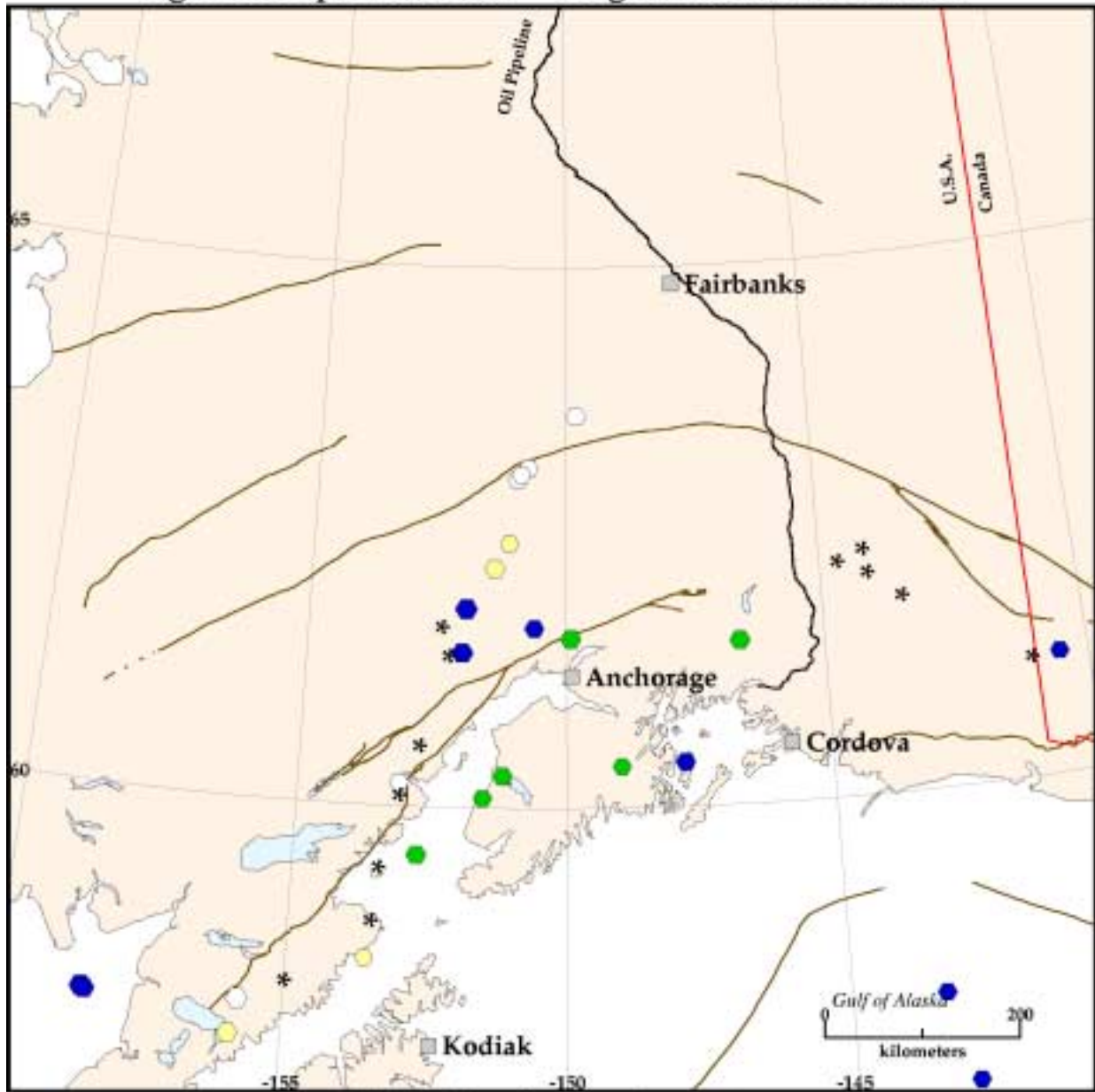


Figure 3: September 2001 -- Magnitude 3.0 and Greater



41 events plotted

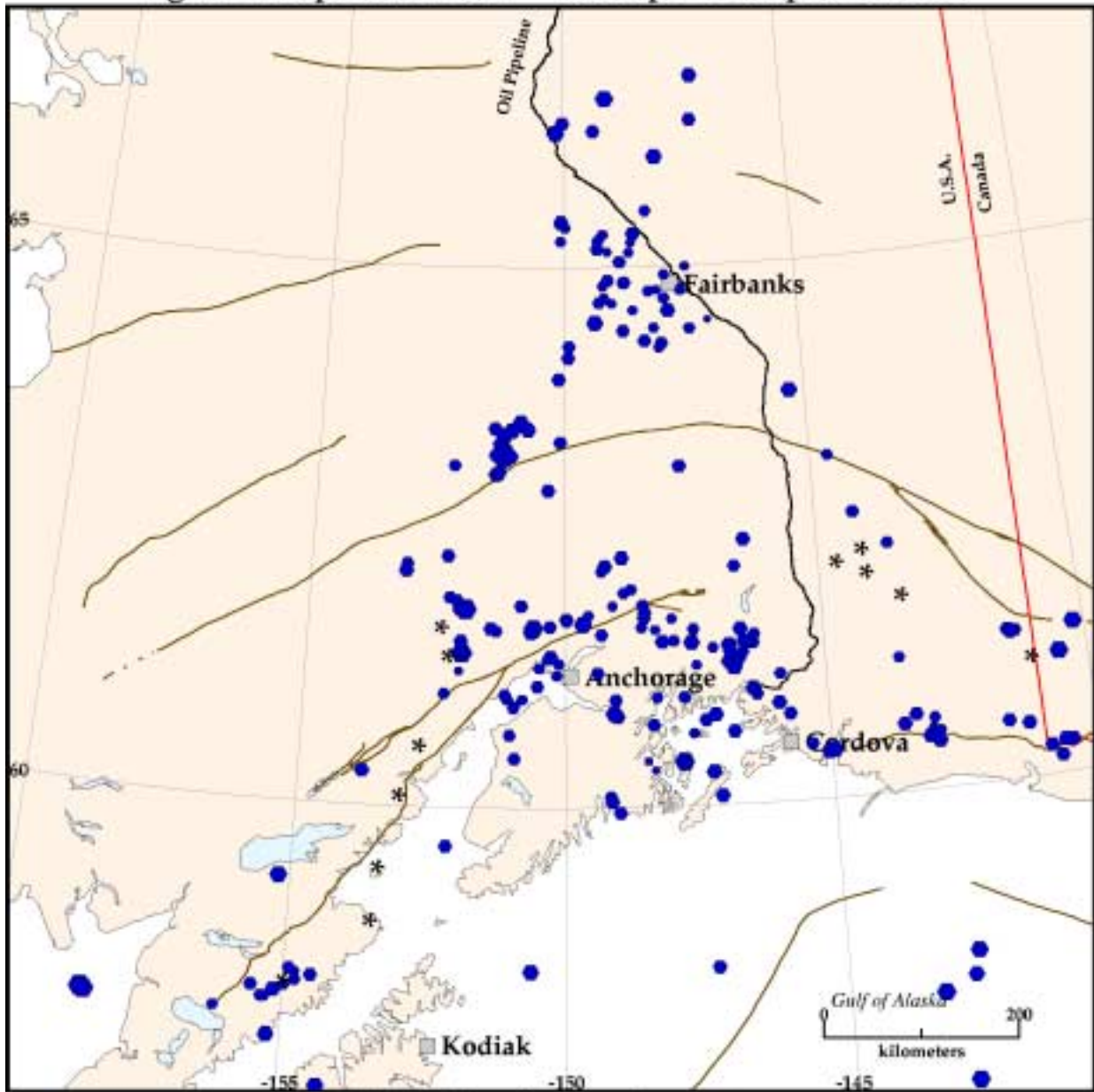
- Depth ≤ 30
- $30 < \text{Depth} \leq 75$
- $75 < \text{Depth} \leq 125$
- Depth > 125

Alaska Earthquake Information Center
 UAF Geophysical Institute
 U.S. Geological Survey

* Volcano

- No M
- M = 2.0
- M = 3.0
- M = 4.0
- M = 5.0

Figure 4: September 2001 -- Earthquake Depth < 30 km



257 events plotted

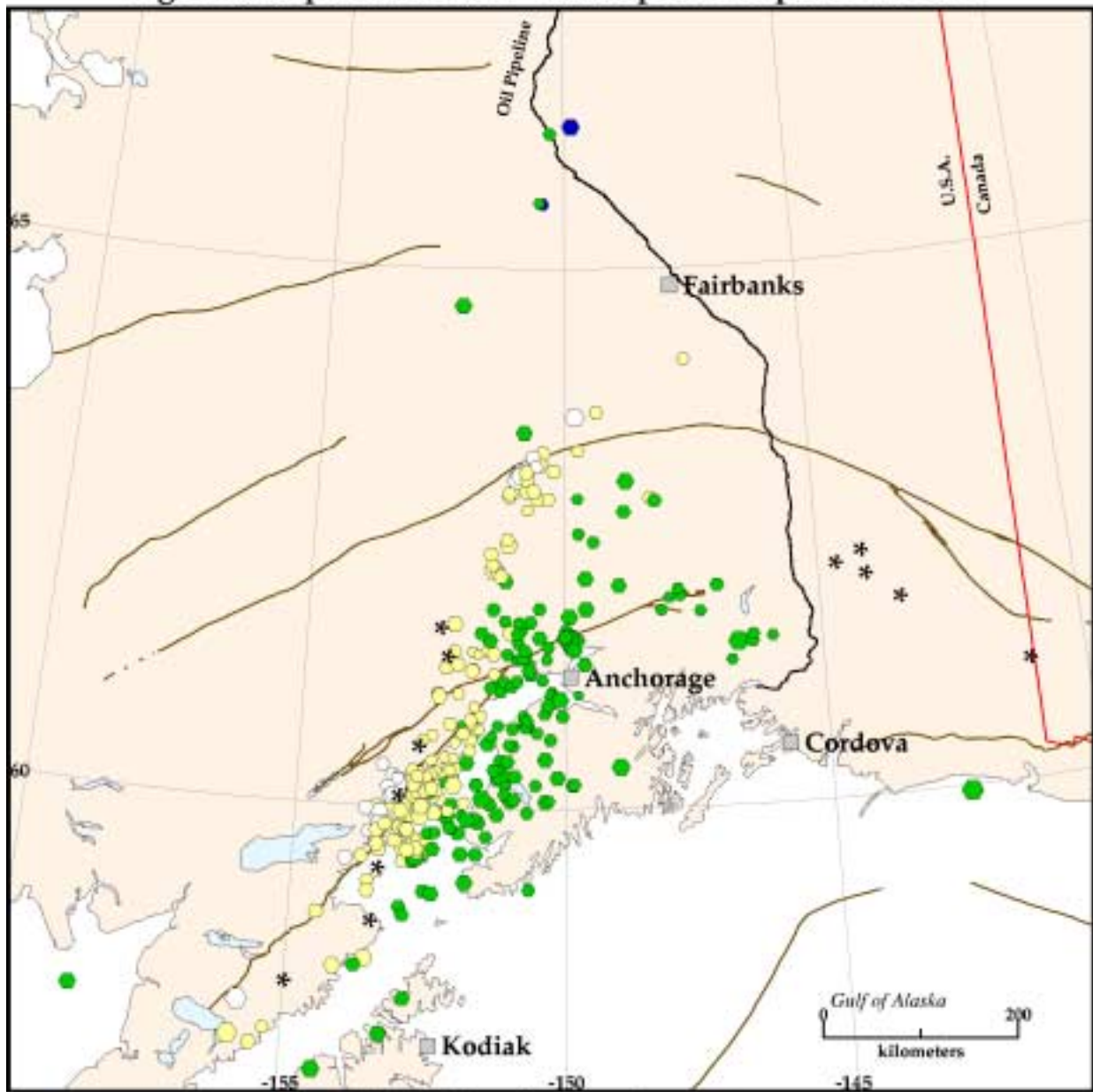
- Depth ≤ 30
- 30 < Depth ≤ 75
- 75 < Depth ≤ 125
- Depth > 125

Alaska Earthquake Information Center
 UAF Geophysical Institute
 U.S. Geological Survey

* Volcano

- No M
- M = 2.0
- M = 3.0
- M = 4.0
- M = 5.0

Figure 5: September 2001 -- Earthquake Depth ≥ 30 km



351 events plotted

- Depth ≤ 30
- 30 < Depth ≤ 75
- 75 < Depth ≤ 125
- Depth > 125

Alaska Earthquake Information Center
 UAF Geophysical Institute
 U.S. Geological Survey

* Volcano

- No M
- M = 2.0
- M = 3.0
- M = 4.0
- M = 5.0

Monthly Listing of Earthquake Hypocenters in Alaska

Events are listed in chronological order. The following data are given for each event:

1. DATE AND TIME in Coordinated Universal Time (UTC): year (YR), month (MO), day (DY), Julian day (JDY), hour (HR), minute (MN) and second (SEC). To convert to Alaska Standard Time (AST) or Alaska Daylight Time (ADT) subtract 9 or 8 hours, respectively.
2. LATITUDE and LONGITUDE of epicenter in degrees (DEG). South and west = negative.
3. DEPTH, depth of focus in kilometers. Symbols after the depth indicate the following:
 - N = Depth was fixed at 33 km for earthquakes whose character on seismograms indicates a shallow focus but whose depth is not satisfactorily determined by the data.
 - D = Depth was restrained by the computer program based on 2 or more compatible pP phases and/or unidentified secondary arrivals used as pP.
 - G = Depth was fixed at other than 33 km.
 - * or ? = Less well-constrained free depth determined by NEIC. For detailed explanation see January 1993 Preliminary Determination of Epicenters.
4. PREFERRED MAG, the AEIC ML is the preferred magnitude, unless it is unavailable or when the National Earthquake Information Service (NEIS) $m_b \geq 4.5$ or $M_S \geq 6.8$. For preferred magnitudes other than AEIC ML a letter code after the magnitude indicates the type as follows:
 - mb = Body-wave magnitude (Mb) computed by NEIS.
 - Ms = Surface wave magnitude (MS) computed by NEIS.
 - A = Local magnitude (ML) from Alaska Tsunami Warning Center, Palmer, Alaska (PMR).
 - C = Local magnitude (ML) from Pacific Geoscience Centre, Sidney, British Columbia, Canada (PGC).
 - D = Duration magnitude (MD) from AEIC.
 - L = Duration magnitude (MD) from Columbia University, Lamont-Doherty Earth Observatory, Palisades, New York (PAL).
5. RMS, root-mean-square traveltimes residual in seconds:

$$RMS = \sqrt{\frac{\sum_i^N W_i \times R_i^2}{N}}$$

Where R_i is the observed minus computed time of the i -th observation. W_i is the corresponding weight of the observation, and weights are normalized so that their sum equals N , the total number of P, S, and S-P observations used in the solution.

6. SEH, standard error in the horizontal direction with least control in kilometers.
7. SEZ, standard error of depth in kilometers.
8. GAP, largest azimuthal separation between stations in degrees with respect to the epicenter.
9. PHASES, number of P and S phases used in the solution.
10. MIN DIS, epicentral distance in kilometers to the station closest to the epicenter.
11. Q, quality of the hypocenter. This index is a measure of the precision of the hypocenter and is calculated from SEH and SEZ:

Q	<u>Larger of SEH and SEZ (km)</u>
A	≤ 1.34
B	≤ 2.67
C	≤ 5.35
D	> 5.35

12. T, event type as follows:

- E - Local or regional tectonic earthquake located by AEIC.
- a - Volcano-tectonic earthquake located by AEIC.
- B - Long period volcano earthquake located by AEIC.
- R - Regional event not located by AEIC.
- Q - Known or suspected quarry or mine blast located by AEIC.

13. COMMENTS, symbols and abbreviations used in comments:

- BRK - University of California, Berkeley.
- Mo - Seismic moment.
- NEIS - U.S. Geological Survey, National Earthquake Information Service.
- PAL - Columbia University, Lamont-Doherty Earth Observatory, Palisades, New York.
- PAS - California Institute of Technology, Pasadena.
- PGC - Pacific Geoscience Centre, Sidney, British Columbia, Canada.
- PMR - Alaska Tsunami Warning Center, Palmer, Alaska.
- PPT - Laboratoire de Geophysique, Papeete, French Polynesia.
- SPEC - An NEIS solution based on use of dense local networks, a local crustal model, or other methods not routinely applied in calculating the hypocenter parameters.

Errors and uncertainties in the reported parameters may result from random errors present in the phase data, or from systematic errors introduced either by the velocity models used to locate the earthquakes or by poor geometrical distribution of recording stations about the source. One should be particularly cautious using solutions that have $GAP > 180$ degrees, $P < 6$, $S = 0$, $MIN\ DIS > DEPTH$, $RMS > 0.75s$, $SEH > 5km$, or $SEZ > 10km$. Solutions with A and B quality are generally more reliable, but this does not guarantee that the accuracy of the solutions is within the limits implied by SEH and SEZ. Catalogs prior to January 1998 have printed SEH and SEZ values that are too large by a factor of 1.87.

AEIC Monthly Earthquake Listing.

DATE	LAT	LON	DEPTH	MAG	RMS	SEH	SEZ	GAP	PHASES	MIN	Q	T	REGION
yy mo dy jday hh:mm:sec	DEG	DEG	km	mb	ML	sec.	km	km	deg	P,S	DIS		
01 09 1 (244) 00:11:13.975	54.187	-164.109	10.99			2.1	0.23	2.69	2.14	204.2	22	44.36	C E UNIMAK ISLAND REGION
01 09 1 (244) 01:02:33.519	51.512	-176.982	5.91			1.6	0.34	3.32	1.72	274.3	25	32.80	C E ANDREANOF IS., ALEUTIAN IS.
01 09 1 (244) 04:16:57.662	58.989	-154.495	125.00			2.2	0.48	0.85	0.61	115.5	36	44.48	A E ALASKA PENINSULA
01 09 1 (244) 04:28:39.981	63.426	-151.220	11.38			1.7	0.83	5.56	1.25	108.0	17	20.57	D E CENTRAL ALASKA
01 09 1 (244) 08:14:23.864	63.502	-150.753	11.49			2.3	1.14	1.36	0.97	60.5	36	10.12	B E CENTRAL ALASKA
01 09 1 (244) 08:33:42.829	61.570	-150.508	46.09			1.4	0.56	1.77	2.47	108.0	25	34.47	B E SOUTHERN ALASKA
01 09 1 (244) 12:08:03.642	58.241	-155.161	3.97			2.2	0.76	0.55	0.24	54.5	22	1.33	A E ALASKA PENINSULA
01 09 1 (244) 12:14:00.972	61.869	-150.856	-3.00			1.8	0.76	0.94	1.78	153.0	19	56.82	B E SOUTHERN ALASKA
01 09 1 (244) 13:27:48.964	64.825	-149.163	17.79			1.0	0.74	1.49	1.53	143.0	14	27.80	B E CENTRAL ALASKA
01 09 1 (244) 16:13:55.701	59.703	-152.578	86.14			1.5	0.66	1.80	2.56	148.7	24	47.03	B E SOUTHERN ALASKA
01 09 1 (244) 18:34:53.507	60.035	-151.411	52.92			1.8	0.53	2.10	3.05	136.6	29	6.89	C E KENAI PENINSULA, ALASKA
01 09 1 (244) 19:00:06.838	61.636	-151.335	-1.38			1.3	1.14	1.93	1.17	152.0	30	50.70	B E SOUTHERN ALASKA
01 09 2 (245) 00:27:08.237	60.772	-150.740	58.71			2.4	0.82	0.44	0.58	48.5	69	27.24	A E KENAI PENINSULA, ALASKA
01 09 2 (245) 00:30:49.563	61.310	-146.858	29.80			1.2	0.31	1.42	2.75	106.0	15	31.58	C E SOUTHERN ALASKA
01 09 2 (245) 00:31:07.006	61.129	-151.282	66.70			2.0	0.91	1.30	0.92	45.0	45	41.81	A E SOUTHERN ALASKA
01 09 2 (245) 01:27:25.508	64.649	-152.161	36.99			2.6	0.69	2.46	4.07	70.0	23	79.50	C E CENTRAL ALASKA
01 09 2 (245) 01:56:41.156	63.214	-151.275	13.47			2.2	0.74	1.72	0.80	76.5	29	41.59	B E CENTRAL ALASKA
01 09 2 (245) 02:48:26.820	51.133	-178.904	6.95			2.9	0.51	160.09	110.94	349.0	19	135.10	D E ANDREANOF IS., ALEUTIAN IS.
01 09 2 (245) 04:17:14.310	61.083	-151.240	60.87			1.6	0.69	2.71	4.22	110.0	24	45.03	C E SOUTHERN ALASKA
01 09 2 (245) 05:08:07.717	59.949	-152.814	71.57			1.4	0.92	6.88	7.17	212.1	12	16.68	D E SOUTHERN ALASKA
01 09 2 (245) 07:23:38.490	61.298	-152.290	120.45			2.2	0.60	2.45	2.34	77.4	44	4.56	B E SOUTHERN ALASKA
01 09 2 (245) 07:53:18.911	59.735	-151.481	43.09			1.6	0.51	2.53	2.17	202.2	15	33.36	B E KENAI PENINSULA, ALASKA
01 09 2 (245) 08:21:41.242	60.677	-146.806	15.41			1.9	0.62	0.58	0.64	67.9	31	12.79	A E SOUTHERN ALASKA
01 09 2 (245) 08:55:25.784	63.212	-150.650	133.91			2.0	0.52	1.74	1.76	132.7	43	40.25	B E CENTRAL ALASKA
01 09 2 (245) 10:26:55.692	62.894	-151.119	114.59			2.0	0.64	1.89	2.15	74.0	36	69.60	B E CENTRAL ALASKA
01 09 2 (245) 10:33:49.063	61.967	-147.741	33.05			1.6	0.75	1.53	1.53	75.0	31	26.24	B E SOUTHERN ALASKA
01 09 2 (245) 10:40:14.817	59.218	-152.599	49.22			2.0	0.71	2.35	3.14	108.8	52	50.81	C E SOUTHERN ALASKA
01 09 2 (245) 11:20:16.720	51.514	-173.641	33.00	4.4									R ANDREANOF IS., ALEUTIAN IS.
01 09 2 (245) 12:53:25.806	61.425	-151.108	63.30			1.6	0.68	1.80	1.79	46.8	39	49.59	B E SOUTHERN ALASKA
01 09 2 (245) 13:34:42.560	59.639	-152.209	3.45			1.8	0.63	2.29	1.53	169.2	28	64.49	B E SOUTHERN ALASKA
01 09 2 (245) 14:00:15.528	60.089	-151.563	66.05			3.0	0.76	0.62	0.96	58.3	95	16.01	A E KENAI PENINSULA, ALASKA
01 09 2 (245) 15:50:49.458	60.787	-150.780	58.78			1.8	0.52	1.00	1.82	72.0	31	29.91	B E KENAI PENINSULA, ALASKA
01 09 2 (245) 16:58:45.612	64.486	-149.341	16.53			2.6	0.75	0.64	0.69	78.0	24	16.23	A E CENTRAL ALASKA
01 09 2 (245) 18:41:22.344	62.875	-148.273	76.13			2.0	0.78	1.03	1.37	42.9	54	50.70	B E CENTRAL ALASKA
01 09 2 (245) 18:54:54.700	59.606	-152.999	104.28			2.3	0.52	1.37	1.44	92.4	59	35.02	B E SOUTHERN ALASKA
01 09 2 (245) 19:02:14.868	64.591	-147.774	17.28			2.2	0.73	0.42	0.26	52.8	26	6.34	A E CENTRAL ALASKA
01 09 2 (245) 21:12:45.483	59.755	-153.530	125.33			1.8	0.83	3.47	2.14	209.0	19	41.81	C E SOUTHERN ALASKA
01 09 2 (245) 21:24:47.768	60.661	-151.757	73.80			1.6	0.55	1.84	2.56	89.1	30	29.69	B E KENAI PENINSULA, ALASKA
01 09 2 (245) 22:22:37.866	61.010	-146.344	11.37			1.5	0.97	0.65	0.53	47.0	28	13.57	A E SOUTHERN ALASKA
01 09 2 (245) 22:26:53.321	54.563	-162.837	48.62			2.4	0.57	6.91	3.26	209.7	27	58.04	D E ALASKA PENINSULA
01 09 2 (245) 22:34:22.277	61.329	-152.060	108.42			2.0	0.85	2.12	1.85	69.0	40	3.67	B E SOUTHERN ALASKA
01 09 3 (246) 01:47:00.721	58.172	-155.346	2.83			1.2	0.27	0.22	0.49	62.8	22	4.45	A E ALASKA PENINSULA
01 09 3 (246) 02:50:44.962	61.733	-151.165	68.02			1.5	0.82	2.36	2.99	210.0	21	63.93	C E SOUTHERN ALASKA
01 09 3 (246) 03:09:18.776	61.533	-150.909	47.57			1.5	0.62	0.45	1.11	89.0	41	56.04	A E SOUTHERN ALASKA
01 09 3 (246) 03:28:13.071	62.325	-152.314	14.84			1.8	1.22	5.65	4.30	116.0	26	102.74	D E CENTRAL ALASKA
01 09 3 (246) 04:46:16.903	62.867	-150.333	84.73			2.1	0.65	0.38	0.48	62.8	48	37.36	A E CENTRAL ALASKA
01 09 3 (246) 06:11:18.483	59.632	-152.882	88.45			1.5	0.73	1.46	0.71	137.5	28	37.69	B E SOUTHERN ALASKA
01 09 3 (246) 08:51:47.332	57.822	-155.225	2.88			2.4	0.53	1.14	0.64	147.4	34	26.02	A E ALASKA PENINSULA
01 09 3 (246) 09:50:06.025	61.272	-146.758	12.64			2.7	0.87	0.31	0.43	30.9	80	25.57	A E SOUTHERN ALASKA
01 09 3 (246) 11:06:13.761	60.489	-143.147	-1.61			2.2	1.17	0.29	0.21	75.0	35	34.36	A E SOUTHERN ALASKA
01 09 3 (246) 12:08:02.876	60.440	-151.234	68.32			1.6	0.58	0.75	2.27	79.4	27	44.14	B E KENAI PENINSULA, ALASKA
01 09 3 (246) 12:17:46.624	60.412	-147.775	27.68			3.3	0.94	0.18	0.61	81.1	110	63.82	A E SOUTHERN ALASKA
01 09 3 (246) 13:40:08.197	55.496	-161.856	22.08			N/A	0.49	0.96	0.36	220.0	17	6.34	A E ALASKA PENINSULA
01 09 3 (246) 13:55:17.407	53.822	-163.641	127.86			2.4	1.07	15.08	7.11	274.0	17	91.84	D E UNIMAK ISLAND REGION
01 09 3 (246) 14:14:11.696	53.884	-163.984	17.10			2.0	0.79	2.56	6.88	227.5	33	76.17	D E UNIMAK ISLAND REGION
01 09 3 (246) 14:21:15.205	61.550	-145.967	34.43			1.1	0.74	0.70	0.61	74.0	33	6.89	A E SOUTHERN ALASKA
01 09 3 (246) 14:39:51.053	64.850	-148.748	20.15			0.7	0.61	0.80	0.25	140.0	18	27.24	A E CENTRAL ALASKA
01 09 3 (246) 15:35:57.158	60.435	-145.058	11.88			2.3	0.67	1.02	0.53	108.8	36	13.79	A E SOUTHERN ALASKA
01 09 3 (246) 15:49:36.142	61.870	-148.487	5.92			1.4	1.02	0.75	0.26	201.0	19	10.56	A E SOUTHERN ALASKA
01 09 3 (246) 16:02:21.489	51.181	-179.507	144.20			2.8	0.37	28.95	3.07	353.0	23	170.12	D E ANDREANOF IS., ALEUTIAN IS.

01 09 3 (246) 17:08:04.500	60.810	-130.310	10.00G	3.2											R	SOUTHERN YUKON TERRI-
TORY, CANADA																
01 09 3 (246) 18:47:34.391	62.444	-151.125	88.26	3.0	0.79	0.38	0.35	43.9	89	44.25	A	E	CENTRAL ALASKA			
01 09 3 (246) 18:48:29.030	51.332	-175.608	25.76	2.7	0.90	5.72	76.22	303.0	20	75.94	D	E	ANDREANOF IS., ALEUTIAN IS.			
01 09 3 (246) 19:37:10.251	52.671	-168.262	1.24	2.7	0.59	41.12	25.38	349.0	16	154.44	D	E	FOX ISLANDS, ALEUTIAN IS.			
01 09 3 (246) 19:59:20.908	56.501	-156.684	78.81	3.1	0.94	11.44	11.92	231.2	41	95.62	D	E	ALASKA PENINSULA			
01 09 3 (246) 20:02:04.942	60.855	-150.052	31.70	1.7	0.33	0.93	1.82	90.0	14	39.25	B	E	KENAI PENINSULA, ALASKA			
01 09 3 (246) 20:18:48.556	53.090	-166.545	15.79	2.1	0.84	5.74	6.59	319.3	17	81.39	D	E	FOX ISLANDS, ALEUTIAN IS.			
01 09 3 (246) 21:14:22.313	64.665	-148.977	15.56	0.9	0.61	1.51	0.48	110.0	18	10.90	B	E	CENTRAL ALASKA			
01 09 3 (246) 21:19:16.737	62.491	-151.143	85.65	1.7	0.62	3.26	1.86	78.6	24	45.92	C	E	CENTRAL ALASKA			
01 09 3 (246) 22:48:58.751	63.461	-151.228	-0.93	1.1	0.72	5.75	2.67	110.9	16	18.35	D	E	CENTRAL ALASKA			
01 09 3 (246) 23:23:19.082	60.751	-151.945	68.26	1.7	0.71	0.35	0.38	71.0	48	31.91	A	E	KENAI PENINSULA, ALASKA			
01 09 3 (246) 23:36:13.137	60.257	-152.583	86.58	1.6	1.01	1.01	1.59	100.4	33	24.68	B	E	SOUTHERN ALASKA			
01 09 4 (247) 02:20:10.270	60.084	-152.352	72.52	1.6	0.61	1.26	2.44	105.4	22	37.58	B	E	SOUTHERN ALASKA			
01 09 4 (247) 03:07:36.391	60.272	-151.286	61.31	1.9	0.88	0.98	1.84	82.3	31	25.24	B	E	KENAI PENINSULA, ALASKA			
01 09 4 (247) 03:43:59.267	61.658	-151.445	1.00G	2.0	1.17	1.33	0.00	69.0	47	47.14	A	E	SOUTHERN ALASKA			
01 09 4 (247) 06:09:21.874	59.975	-153.422	142.01	2.3	1.00	1.25	1.16	126.1	49	19.79	A	E	SOUTHERN ALASKA			
01 09 4 (247) 06:25:35.189	61.751	-148.463	8.61	1.8	1.12	0.52	0.18	70.0	24	9.34	A	E	SOUTHERN ALASKA			
01 09 4 (247) 07:30:00.355	60.764	-151.279	58.90	1.5	0.48	1.11	2.86	79.0	33	62.49	C	E	KENAI PENINSULA, ALASKA			
01 09 4 (247) 08:31:05.457	61.168	-151.180	54.69	1.8	0.70	1.01	1.79	75.4	37	46.92	B	E	SOUTHERN ALASKA			
01 09 4 (247) 10:30:35.182	53.514	-165.411	10.91	1.9	0.31	2.93	3.44	262.0	32	68.94	C	E	FOX ISLANDS, ALEUTIAN IS.			
01 09 4 (247) 11:24:24.784	63.195	-150.690	135.62	2.2	0.70	0.96	1.16	70.6	51	41.36	A	E	CENTRAL ALASKA			
01 09 4 (247) 13:41:19.927	63.287	-150.441	121.27	2.2	0.84	0.68	0.72	76.5	49	38.03	A	E	CENTRAL ALASKA			
01 09 4 (247) 13:45:21.861	61.323	-146.877	19.50	1.6	0.61	0.23	0.35	43.0	31	33.36	A	E	SOUTHERN ALASKA			
01 09 4 (247) 14:27:12.479	59.738	-140.058	-0.88	1.9	0.70	0.38	0.22	150.3	22	27.69	A	E	SOUTHEASTERN ALASKA			
01 09 4 (247) 15:19:27.753	61.781	-149.547	27.00	1.1	0.62	0.62	1.01	137.2	19	30.35	A	E	SOUTHERN ALASKA			
01 09 4 (247) 15:48:02.142	63.185	-150.516	114.22	2.5	0.89	0.45	0.53	67.8	67	45.59	A	E	CENTRAL ALASKA			
01 09 4 (247) 16:41:28.857	59.995	-153.498	118.69	1.8	0.97	3.28	1.79	174.0	18	25.35	C	E	SOUTHERN ALASKA			
01 09 4 (247) 17:50:50.713	60.216	-153.117	137.73	3.2	0.72	0.23	0.30	87.0	138	17.46	A	E	SOUTHERN ALASKA			
01 09 4 (247) 18:10:18.020	59.921	-152.213	65.19	2.7	0.83	0.53	0.45	82.6	94	45.14	A	E	SOUTHERN ALASKA			
01 09 4 (247) 18:39:54.291	55.238	-158.895	46.05	3.5	1.70	2.08	0.39	220.6	49	102.07	B	E	ALASKA PENINSULA			
01 09 4 (247) 19:31:27.418	58.178	-155.354	1.93	0.7	0.12	0.34	0.52	82.0	17	4.00	A	E	ALASKA PENINSULA			
01 09 4 (247) 19:49:26.644	54.687	-160.960	4.90	N/A	0.42	7.45	6.33	321.0	12	77.28	D	E	ALASKA PENINSULA			
01 09 4 (247) 20:42:50.457	63.382	-150.087	7.77	1.7	0.77	0.40	0.38	110.1	32	45.59	A	E	CENTRAL ALASKA			
01 09 4 (247) 21:03:22.824	62.445	-146.451	7.50	2.0	1.22	0.55	1.59	42.0	45	69.38	B	E	CENTRAL ALASKA			
01 09 4 (247) 23:38:51.868	60.120	-152.852	91.96	1.8	0.68	4.78	4.83	114.8	21	7.45	C	E	SOUTHERN ALASKA			
01 09 5 (248) 01:06:38.400	51.243	-179.628	33.00	4.5									R	ANDREANOF IS., ALEUTIAN IS.		
01 09 5 (248) 05:02:27.163	53.558	-163.435	34.43	N/A	0.99	6.93	105.48	235.4	41	122.53	D	E	UNIMAK ISLAND REGION			
01 09 5 (248) 05:41:10.916	60.251	-152.867	103.05	1.7	0.70	3.60	3.21	159.7	19	19.68	C	E	SOUTHERN ALASKA			
01 09 5 (248) 06:18:36.215	60.018	-153.148	113.66	1.8	0.81	5.54	4.67	269.0	18	12.56	D	E	SOUTHERN ALASKA			
01 09 5 (248) 07:40:07.648	60.841	-149.010	10.18	2.2	0.74	0.78	1.09	57.2	57	43.48	A	E	KENAI PENINSULA, ALASKA			
01 09 5 (248) 08:18:18.127	60.949	-150.972	2.04	0.9	0.90	1.66	1.55	100.0	25	63.49	B	E	KENAI PENINSULA, ALASKA			
01 09 5 (248) 09:05:20.182	62.047	-147.006	40.07	1.8	0.76	0.88	1.47	45.6	35	29.13	B	E	CENTRAL ALASKA			
01 09 5 (248) 10:46:25.245	60.728	-151.697	81.88	1.7	0.58	0.93	1.84	79.9	32	25.02	B	E	KENAI PENINSULA, ALASKA			
01 09 5 (248) 10:47:38.305	58.582	-153.609	80.13	3.0	0.62	0.81	0.81	92.8	103	42.81	A	E	KODIAK ISLAND REGION			
01 09 5 (248) 11:47:28.985	60.315	-152.436	77.73	2.5	0.70	1.23	0.50	70.2	66	23.91	A	E	SOUTHERN ALASKA			
01 09 5 (248) 13:19:50.727	61.435	-152.002	6.69	1.4	0.35	1.45	0.47	152.0	17	8.90	B	E	SOUTHERN ALASKA			
01 09 5 (248) 14:19:19.788	60.636	-150.284	44.94	1.6	0.45	1.00	1.97	59.6	28	14.23	B	E	KENAI PENINSULA, ALASKA			
01 09 5 (248) 15:41:39.592	59.569	-152.611	68.10	2.2	0.64	2.31	2.81	144.5	40	60.04	C	E	SOUTHERN ALASKA			
01 09 5 (248) 17:51:48.948	62.103	-151.169	68.84	2.2	0.71	1.11	1.60	53.3	58	57.37	B	E	CENTRAL ALASKA			
01 09 5 (248) 19:15:38.309	61.591	-149.871	48.59	2.3	0.56	0.78	1.06	45.9	56	6.67	A	E	SOUTHERN ALASKA			
01 09 5 (248) 21:15:53.291	57.243	-154.060	53.22	2.6	0.34	5.43	8.73	260.6	23	106.63	D	E	KODIAK ISLAND REGION			
01 09 5 (248) 22:27:27.501	63.493	-151.078	8.88	2.4	0.95	1.88	0.51	79.1	35	10.23	B	E	CENTRAL ALASKA			
01 09 6 (249) 00:22:58.656	55.291	-159.560	-0.27	2.9	0.76	10.00	2.85	226.4	23	59.60	D	E	ALASKA PENINSULA			
01 09 6 (249) 00:58:34.957	55.111	-160.430	151.04	N/A	0.52	11.10	8.75	282.0	15	26.02	D	E	ALASKA PENINSULA			
01 09 6 (249) 01:13:14.193	63.543	-150.940	7.92	2.1	1.08	0.61	0.38	92.0	31	1.45	A	E	CENTRAL ALASKA			
01 09 6 (249) 05:19:22.265	61.243	-149.374	29.35	1.7	0.62	0.64	0.44	77.0	27	10.01	A	E	SOUTHERN ALASKA			
01 09 6 (249) 06:34:09.270	53.927	-163.472	13.42	2.0	0.43	1.74	4.54	231.9	37	81.84	C	E	UNIMAK ISLAND REGION			
01 09 6 (249) 07:51:34.779	63.085	-151.397	7.17	2.0	0.74	1.11	0.30	117.0	32	57.26	A	E	CENTRAL ALASKA			
01 09 6 (249) 09:30:56.432	60.286	-152.140	80.23	2.2	0.68	0.35	0.47	85.8	53	35.14	A	E	SOUTHERN ALASKA			
01 09 6 (249) 10:23:40.690	63.480	-150.827	33.47	2.5	1.38	2.43	1.59	76.3	38	81.72	B	E	CENTRAL ALASKA			
01 09 6 (249) 10:42:46.190	64.778	-147.493	24.30	1.1	0.78	0.43	0.13	148.0	15	20.01	A	E	CENTRAL ALASKA			
01 09 6 (249) 10:52:57.962	53.495	-165.737	23.18	4.5	0.89	1.69	0.97	203.4	52	63.82	B	E	FOX ISLANDS, ALEUTIAN IS.			
01 09 6 (249) 13:23:42.301	60.672	-151.064	28.54	1.5	0.65	0.93	6.29	136.0	22	49.37	D	E	KENAI PENINSULA, ALASKA			
01 09 6 (249) 13:42:07.472	55.104	-161.927	91.29	2.5	0.43	0.78	0.86	161.5	40	6.45	A	E	ALASKA PENINSULA			
01 09 6 (249) 14:35:03.881	60.794	-147.334	17.42	1.8	0.58	0.60	0.27	120.0	36	16.12	A	E	SOUTHERN ALASKA			
01 09 6 (249) 15:41:16.496	60.081	-152.345	77.76	1.8	0.64	0.79	1.02	146.6	44	34.14	A	E	SOUTHERN ALASKA			
01 09 6 (249) 16:03:42.475	61.697	-149.654	27.61	2.9	1.22	0.18	0.40	43.1	92	12.90	A	E	SOUTHERN ALASKA			

01 09 6 (249) 17:16:30.862	61.284	-151.745	117.11	1.4	0.81	2.28	0.95	263.0	21	14.23	B	E	SOUTHERN ALASKA
01 09 6 (249) 22:02:22.187	51.456	-175.261	25.43	1.4	0.32	7.04	93.49	333.0	16	74.61	D	E	ANDREANOF IS., ALEUTIAN IS.
01 09 6 (249) 23:14:33.695	60.777	-152.185	99.06	2.0	0.71	2.42	1.37	118.1	27	25.57	B	E	SOUTHERN ALASKA
01 09 6 (249) 23:48:01.233	61.059	-152.044	90.75	1.5	0.67	2.10	0.74	93.0	36	13.68	B	E	SOUTHERN ALASKA
01 09 7 (250) 00:49:17.514	60.286	-153.226	138.17	2.0	0.61	2.16	2.09	99.3	30	27.24	B	E	SOUTHERN ALASKA
01 09 7 (250) 01:43:53.954	61.372	-150.918	53.57	1.1	0.70	5.41	5.56	161.0	21	64.27	D	E	SOUTHERN ALASKA
01 09 7 (250) 02:12:30.621	59.997	-153.235	94.13	1.6	1.22	6.58	4.19	190.0	12	17.79	D	E	SOUTHERN ALASKA
01 09 7 (250) 02:29:24.014	60.605	-152.080	95.99	1.3	0.59	3.46	4.51	110.2	18	18.12	C	E	SOUTHERN ALASKA
01 09 7 (250) 02:32:59.273	60.018	-152.942	103.01	1.9	0.75	3.49	2.20	104.1	29	7.00	C	E	SOUTHERN ALASKA
01 09 7 (250) 04:19:32.021	51.606	-176.506	64.38	2.1	0.23	5.63	2.25	246.2	28	29.35	D	E	ANDREANOF IS., ALEUTIAN IS.
01 09 7 (250) 05:33:05.962	63.148	-147.667	2.55	1.9	0.96	1.37	1.26	55.9	41	65.82	B	E	CENTRAL ALASKA
01 09 7 (250) 07:36:08.370	60.094	-152.449	82.08	1.3	0.58	4.38	4.91	154.8	13	28.35	C	E	SOUTHERN ALASKA
01 09 7 (250) 10:12:46.514	53.499	-165.715	8.96	2.5	0.35	2.25	3.78	257.0	40	64.60	C	E	FOX ISLANDS, ALEUTIAN IS.
01 09 7 (250) 13:47:45.222	61.437	-150.763	41.42	1.8	0.70	1.05	3.50	54.9	33	67.60	C	E	SOUTHERN ALASKA
01 09 7 (250) 14:25:00.844	62.212	-151.399	84.62	3.5	0.69	0.80	0.99	47.1	100	62.16	A	E	CENTRAL ALASKA
01 09 7 (250) 14:49:50.194	59.854	-152.999	79.33	1.7	0.77	2.26	1.13	221.3	25	25.24	B	E	SOUTHERN ALASKA
01 09 7 (250) 15:11:51.814	59.866	-151.624	47.54	2.1	0.77	1.62	1.80	122.8	41	27.24	B	E	KENAI PENINSULA, ALASKA
01 09 7 (250) 15:13:43.612	64.600	-148.526	17.51	0.8	0.62	1.79	2.25	114.0	13	25.35	B	E	CENTRAL ALASKA
01 09 7 (250) 16:48:46.345	59.547	-152.616	46.22	1.6	0.92	2.18	2.53	173.5	20	49.70	B	E	SOUTHERN ALASKA
01 09 7 (250) 17:46:10.477	61.849	-150.500	55.40	1.6	0.43	1.64	4.32	77.9	18	63.04	C	E	SOUTHERN ALASKA
01 09 7 (250) 17:48:00.901	61.049	-152.321	17.39	1.2	0.60	1.60	1.21	140.8	16	16.34	B	E	SOUTHERN ALASKA
01 09 7 (250) 21:02:07.460	55.763	-157.536	20.66	2.5	0.24	10.25	28.91	204.9	14	124.42	D	E	ALASKA PENINSULA
01 09 8 (251) 00:52:20.453	62.130	-149.597	45.66	2.4	0.80	0.44	0.43	47.3	52	46.37	A	E	CENTRAL ALASKA
01 09 8 (251) 01:51:15.936	64.878	-149.054	14.85	1.5	0.66	1.14	0.64	153.0	20	33.47	A	E	CENTRAL ALASKA
01 09 8 (251) 05:21:43.869	63.094	-151.346	5.33	2.0	1.13	0.66	0.74	73.8	34	55.26	A	E	CENTRAL ALASKA
01 09 8 (251) 05:43:32.664	60.371	-152.190	87.64	1.8	0.54	0.68	0.62	88.4	45	25.35	A	E	SOUTHERN ALASKA
01 09 8 (251) 07:13:15.467	51.411	-174.396	33.11	3.0	0.62	7.56	1247.08	338.0	20	123.31	D	E	ANDREANOF IS., ALEUTIAN IS.
01 09 8 (251) 08:39:10.327	61.430	-152.005	2.44	3.7	1.10	0.41	0.18	48.9	116	8.56	A	E	SOUTHERN ALASKA
01 09 8 (251) 08:43:11.183	61.444	-151.998	5.53	1.4	0.74	0.40	0.28	138.0	36	15.23	A	E	SOUTHERN ALASKA
01 09 8 (251) 11:12:15.043	65.598	-150.467	30.00G	1.5	1.27	2.34	0.00	121.0	19	64.27	B	E	ALASKA
01 09 8 (251) 11:29:30.448	57.129	-154.776	38.45	3.4	1.08	0.68	1.66	186.1	88	107.41	B	E	KODIAK ISLAND REGION
01 09 8 (251) 11:42:01.783	60.424	-148.448	11.75	N/A	1.05	1.23	1.32	135.0	12	50.59	A	E	KENAI PENINSULA, ALASKA
01 09 8 (251) 13:33:11.152	54.456	-161.644	1.84	2.9	1.01	1.74	0.83	223.7	41	69.27	B	E	ALASKA PENINSULA
01 09 8 (251) 14:03:24.378	61.445	-152.028	4.90	1.4	0.65	1.04	0.29	139.0	27	15.34	A	E	SOUTHERN ALASKA
01 09 8 (251) 14:19:25.400	60.622	-143.604	23.60	2.2	0.94	0.38	0.80	117.1	39	44.70	A	E	SOUTHERN ALASKA
01 09 8 (251) 14:32:35.378	51.388	-177.562	7.08	1.0	0.44	2.68	1.06	330.0	20	47.26	C	E	ANDREANOF IS., ALEUTIAN IS.
01 09 8 (251) 14:37:04.451	54.418	-161.615	1.00G	N/A	0.95	2.85	0.00	292.0	11	73.83	C	E	ALASKA PENINSULA
01 09 8 (251) 16:16:35.293	59.962	-153.030	110.42	2.2	1.10	0.64	0.34	84.8	36	2.11	A	E	SOUTHERN ALASKA
01 09 8 (251) 17:07:22.531	66.755	-147.064	20.00G	2.2	1.19	3.74	0.00	157.0	21	83.39	C	E	ALASKA
01 09 8 (251) 18:02:34.954	60.701	-143.374	-0.04	1.9	0.84	0.68	0.56	102.4	14	14.23	A	E	SOUTHERN ALASKA
01 09 8 (251) 20:45:59.861	65.300	-149.143	5.82	1.2	0.95	2.38	1.82	229.0	13	57.15	B	E	ALASKA
01 09 8 (251) 22:00:05.802	60.439	-147.797	6.86	1.8	0.72	0.70	0.77	90.9	32	44.36	A	E	SOUTHERN ALASKA
01 09 9 (252) 00:35:32.771	51.407	-177.672	10.00G	N/A	0.57	1.38	0.00	333.0	15	49.70	B	E	ANDREANOF IS., ALEUTIAN IS.
01 09 9 (252) 00:47:50.943	59.942	-151.283	47.70	2.1	0.97	0.60	0.62	65.9	53	11.34	A	E	KENAI PENINSULA, ALASKA
01 09 9 (252) 01:17:05.690	60.599	-151.470	68.78	2.4	1.01	0.36	0.55	45.3	72	20.46	A	E	KENAI PENINSULA, ALASKA
01 09 9 (252) 01:41:00.174	58.128	-155.792	125.99	4.0	1.21	1.04	0.22	102.8	149	15.23	A	E	ALASKA PENINSULA
01 09 9 (252) 01:58:45.259	51.497	-176.339	20.36	2.1	0.22	0.72	14.01	268.3	25	40.81	D	E	ANDREANOF IS., ALEUTIAN IS.
01 09 9 (252) 03:09:45.844	59.701	-152.583	84.02	2.2	0.70	0.38	0.43	89.7	65	39.36	A	E	SOUTHERN ALASKA
01 09 9 (252) 03:19:14.356	63.099	-150.959	133.85	2.0	0.55	1.00	0.66	98.6	34	50.59	A	E	CENTRAL ALASKA
01 09 9 (252) 04:07:57.667	60.855	-151.625	86.68	1.9	0.66	0.52	0.56	73.0	56	24.46	A	E	KENAI PENINSULA, ALASKA
01 09 9 (252) 05:40:23.384	64.923	-147.832	14.32	1.0	0.54	0.27	0.36	148.0	17	5.56	A	E	CENTRAL ALASKA
01 09 9 (252) 05:41:35.247	61.398	-150.286	11.47	2.1	1.37	0.46	0.42	50.6	52	26.46	A	E	SOUTHERN ALASKA
01 09 9 (252) 06:33:40.139	61.458	-151.496	81.32	1.7	0.80	0.81	1.17	129.0	34	31.91	A	E	SOUTHERN ALASKA
01 09 9 (252) 07:06:39.836	60.928	-150.996	12.50	1.5	0.57	0.76	1.27	97.0	27	31.47	A	E	KENAI PENINSULA, ALASKA
01 09 9 (252) 08:40:47.914	60.061	-150.382	54.22	2.3	0.72	0.26	0.31	117.6	55	43.48	A	E	KENAI PENINSULA, ALASKA
01 09 9 (252) 10:04:57.464	63.265	-151.390	21.99	2.1	1.02	0.76	0.39	78.3	27	39.58	A	E	CENTRAL ALASKA
01 09 9 (252) 11:23:10.801	64.410	-148.739	17.66	1.6	0.73	1.07	0.52	93.4	21	24.57	A	E	CENTRAL ALASKA
01 09 9 (252) 12:02:02.626	51.813	-177.281	82.94	1.8	0.23	5.29	0.48	254.0	18	6.56	C	E	ANDREANOF IS., ALEUTIAN IS.
01 09 9 (252) 12:21:25.364	60.672	-147.573	10.99	1.1	0.80	1.09	1.01	75.4	29	34.69	A	E	SOUTHERN ALASKA
01 09 9 (252) 13:29:13.732	60.537	-142.934	11.06	0.8	0.64	1.11	0.92	126.0	12	25.02	A	E	SOUTHERN ALASKA
01 09 9 (252) 17:29:28.444	60.099	-149.159	13.72	1.6	1.27	0.58	0.39	155.0	23	16.23	A	E	KENAI PENINSULA, ALASKA
01 09 9 (252) 18:05:14.101	62.310	-148.883	29.23	2.0	0.66	0.64	0.98	44.0	57	59.82	A	E	CENTRAL ALASKA
01 09 9 (252) 18:35:40.120	60.083	-152.859	106.86	2.1	0.65	0.82	0.42	69.3	68	5.56	A	E	SOUTHERN ALASKA
01 09 9 (252) 19:26:07.492	60.558	-143.072	10.08	0.9	0.49	0.63	0.44	136.3	13	22.46	A	E	SOUTHERN ALASKA
01 09 9 (252) 19:39:09.663	61.650	-150.858	61.51	1.9	0.60	0.78	0.80	198.0	36	51.70	A	E	SOUTHERN ALASKA
01 09 9 (252) 20:03:10.219	64.162	-149.915	14.86	1.8	0.83	0.39	0.34	103.7	24	61.27	A	E	CENTRAL ALASKA
01 09 9 (252) 20:48:14.469	59.593	-153.425	103.61	2.2	0.96	2.21	0.86	147.0	56	45.14	B	E	SOUTHERN ALASKA
01 09 9 (252) 22:16:51.087	59.758	-152.547	66.78	1.7	0.36	1.55	1.30	228.9	19	38.81	B	E	SOUTHERN ALASKA

01 09 9 (252) 22:42:54.127	62.306	-143.599	12.05	1.5	0.99	0.37	0.35	93.5	20	38.47	A	E	CENTRAL ALASKA
01 09 9 (252) 23:11:27.799	54.918	-159.706	10.69	3.4	0.94	0.97	0.78	220.5	51	28.35	A	E	SOUTH OF ALASKA
01 09 9 (252) 23:20:40.800	55.115	-159.792	12.99	3.3	0.93	2.92	1.36	196.2	43	26.80	C	E	ALASKA PENINSULA
01 09 10 (253) 02:13:34.926	66.316	-149.827	30.00G	2.8	0.71	4.06	0.00	159.0	17	148.88	C	E	ALASKA
01 09 10 (253) 02:13:37.515	66.242	-150.174	19.70	2.8	0.66	3.02	4.49	157.0	15	137.21	C	E	ALASKA
01 09 10 (253) 02:57:55.567	61.633	-149.927	39.79	1.1	0.73	2.70	2.83	152.0	15	3.22	C	E	SOUTHERN ALASKA
01 09 10 (253) 05:00:20.199	59.979	-152.930	108.37	2.4	0.73	1.08	1.11	87.4	92	11.34	A	E	SOUTHERN ALASKA
01 09 10 (253) 06:04:57.397	61.004	-150.822	25.19	1.1	0.57	1.56	5.52	119.0	22	21.13	D	E	SOUTHERN ALASKA
01 09 10 (253) 06:22:46.532	64.291	-147.932	10.93	1.6	1.24	0.14	0.29	40.1	26	21.46	A	E	CENTRAL ALASKA
01 09 10 (253) 06:24:19.796	64.249	-147.990	21.10	0.8	0.94	1.24	0.80	96.1	18	25.13	A	E	CENTRAL ALASKA
01 09 10 (253) 08:52:23.250	61.866	-149.074	29.37	0.9	0.55	2.72	1.69	197.0	20	13.01	C	E	SOUTHERN ALASKA
01 09 10 (253) 09:27:00.962	62.545	-149.727	59.89	1.5	0.68	1.93	2.41	91.3	36	31.91	B	E	CENTRAL ALASKA
01 09 10 (253) 10:32:29.822	60.453	-150.383	50.83	2.4	0.76	0.56	0.69	73.8	68	11.12	A	E	KENAI PENINSULA, ALASKA
01 09 10 (253) 11:10:02.974	63.127	-150.886	131.14	2.3	0.65	1.13	1.53	71.1	65	47.37	B	E	CENTRAL ALASKA
01 09 10 (253) 12:29:00.291	60.367	-152.057	95.10	1.6	0.87	2.20	3.42	102.3	27	29.91	C	E	SOUTHERN ALASKA
01 09 10 (253) 13:19:31.338	51.422	-177.578	5.84	1.6	0.54	7.22	1.85	328.0	27	44.70	D	E	ANDREANOF IS., ALEUTIAN IS.
01 09 10 (253) 14:57:22.140	60.468	-152.266	92.80	1.3	0.66	2.44	2.43	86.7	26	14.01	B	E	SOUTHERN ALASKA
01 09 10 (253) 15:05:21.305	64.859	-148.703	7.58	1.6	0.83	1.04	1.66	90.0	22	25.02	B	E	CENTRAL ALASKA
01 09 10 (253) 17:45:43.574	63.141	-150.759	133.84	3.3	0.82	0.99	1.27	36.8	108	46.48	A	E	CENTRAL ALASKA
01 09 10 (253) 19:05:48.157	60.737	-151.002	69.53	1.6	0.57	1.23	2.68	82.0	27	49.37	C	E	KENAI PENINSULA, ALASKA
01 09 10 (253) 22:19:50.180	54.981	-160.854	60.49	N/A	0.73	5.33	3.64	228.9	17	46.03	C	E	ALASKA PENINSULA
01 09 10 (253) 22:32:49.857	60.106	-151.113	74.41	1.5	0.88	2.48	3.82	73.0	23	12.01	C	E	KENAI PENINSULA, ALASKA
01 09 11 (254) 00:16:33.216	56.162	-157.850	53.87	2.2	0.33	14.71	15.03	202.4	9	76.05	D	E	ALASKA PENINSULA
01 09 11 (254) 00:57:25.472	58.504	-147.287	22.27	1.9	0.62	10.48	68.87	290.6	15	173.90	D	E	GULF OF ALASKA
01 09 11 (254) 02:53:56.224	51.418	-177.717	9.18	1.1	0.40	5.35	2.34	337.0	20	50.59	C	E	ANDREANOF IS., ALEUTIAN IS.
01 09 11 (254) 03:35:19.233	62.470	-149.431	58.94	1.4	0.44	1.77	1.98	67.8	31	43.70	B	E	CENTRAL ALASKA
01 09 11 (254) 03:56:25.082	61.457	-147.149	24.34	1.1	0.64	0.59	0.81	51.6	22	42.92	A	E	SOUTHERN ALASKA
01 09 11 (254) 04:17:33.936	60.467	-152.115	90.28	1.2	0.77	1.90	1.52	86.7	19	19.79	B	E	SOUTHERN ALASKA
01 09 11 (254) 04:40:57.006	60.327	-152.739	110.58	1.3	0.70	2.63	2.69	134.8	22	15.12	C	E	SOUTHERN ALASKA
01 09 11 (254) 05:40:25.130	57.803	-155.911	87.89	3.7	0.96	1.44	0.35	138.4	145	34.25	B	E	ALASKA PENINSULA
01 09 11 (254) 07:20:19.169	59.490	-152.994	82.57	1.6	0.88	3.70	1.86	169.8	18	27.58	C	E	SOUTHERN ALASKA
01 09 11 (254) 07:29:04.914	59.505	-154.028	137.73	2.3	0.66	1.18	2.11	114.1	54	36.25	B	E	SOUTHERN ALASKA
01 09 11 (254) 08:43:13.972	62.944	-151.008	116.40	2.1	0.65	0.58	0.68	68.7	57	67.94	A	E	CENTRAL ALASKA
01 09 11 (254) 08:47:35.547	58.420	-154.792	5.40	0.6	0.35	0.55	0.41	126.2	17	4.00	A	E	ALASKA PENINSULA
01 09 11 (254) 09:29:45.974	63.569	-150.892	7.29	2.3	1.13	0.96	0.19	78.2	57	2.33	A	E	CENTRAL ALASKA
01 09 11 (254) 09:35:40.334	60.994	-149.041	8.48	1.7	0.70	0.41	0.48	45.0	45	39.47	A	E	KENAI PENINSULA, ALASKA
01 09 11 (254) 10:32:07.395	63.243	-151.131	1.85	1.6	0.92	1.45	0.87	75.4	33	36.03	B	E	CENTRAL ALASKA
01 09 11 (254) 11:19:38.234	60.342	-152.865	123.47	1.5	0.75	2.92	1.62	162.2	19	24.80	C	E	SOUTHERN ALASKA
01 09 11 (254) 12:31:07.673	60.057	-149.136	14.42	1.9	0.97	1.30	0.53	161.4	40	18.24	A	E	KENAI PENINSULA, ALASKA
01 09 11 (254) 14:03:12.771	61.344	-146.646	28.65	1.3	0.77	0.47	1.11	56.0	29	28.91	A	E	SOUTHERN ALASKA
01 09 11 (254) 15:07:45.824	58.168	-155.303	-0.97	0.8	0.46	0.27	7.04	70.4	17	5.00	D	E	ALASKA PENINSULA
01 09 11 (254) 16:40:45.236	60.935	-151.733	84.77	1.2	0.66	2.06	0.77	92.0	28	32.47	B	E	KENAI PENINSULA, ALASKA
01 09 11 (254) 18:11:15.967	56.075	-157.291	40.20	2.5	0.42	5.24	7.18	197.8	21	99.52	D	E	ALASKA PENINSULA
01 09 11 (254) 18:32:49.548	62.246	-153.116	2.25	1.5	1.22	3.20	1.82	98.0	20	106.41	C	E	CENTRAL ALASKA
01 09 11 (254) 18:35:22.020	61.538	-146.396	35.34	1.3	0.65	0.52	0.79	72.0	28	25.68	A	E	SOUTHERN ALASKA
01 09 11 (254) 19:59:54.017	65.141	-149.052	19.95	0.6	0.62	1.37	0.61	209.0	12	43.59	B	E	ALASKA
01 09 11 (254) 20:42:43.622	61.812	-147.349	37.73	1.3	0.72	1.08	0.65	90.0	25	2.56	A	E	SOUTHERN ALASKA
01 09 11 (254) 21:08:33.806	63.042	-150.963	127.40	3.4	0.81	0.44	0.66	38.4	117	56.82	A	E	CENTRAL ALASKA
01 09 11 (254) 21:09:44.443	52.118	-168.950	19.02	4.1	1.18	5459.57	6502.79	351.0	16	231.61	D	E	FOX ISLANDS, ALEUTIAN IS.
01 09 11 (254) 21:10:57.063	52.541	-169.235	21.62	4.6	1.33	137.69	244.39	351.0	19	208.04	D	E	FOX ISLANDS, ALEUTIAN IS.
01 09 11 (254) 21:31:33.086	66.258	-149.327	20.00G	1.8	0.74	5.25	0.00	152.0	15	151.00	C	E	ALASKA
01 09 11 (254) 21:47:40.789	61.402	-146.581	25.65	1.4	0.73	0.32	0.77	42.5	32	32.80	A	E	SOUTHERN ALASKA
01 09 11 (254) 22:39:42.909	61.004	-151.112	15.01	1.2	0.28	1.21	2062.24	103.0	15	53.48	D	E	SOUTHERN ALASKA
01 09 11 (254) 22:42:21.614	61.642	-149.978	35.41	1.8	0.68	0.43	0.43	43.8	37	5.34	A	E	SOUTHERN ALASKA
01 09 11 (254) 23:51:46.517	51.384	-177.552	6.25	2.6	0.35	2.82	0.82	326.0	22	47.37	C	E	ANDREANOF IS., ALEUTIAN IS.
01 09 12 (255) 00:28:11.410	61.225	-150.163	17.20	1.1	0.80	1.63	1.12	125.0	23	6.56	B	E	SOUTHERN ALASKA
01 09 12 (255) 02:55:56.101	62.064	-148.937	30.16	2.2	0.68	0.66	0.90	39.5	63	32.36	A	E	CENTRAL ALASKA
01 09 12 (255) 07:02:49.188	65.049	-148.786	17.23	1.6	0.76	2.44	0.91	96.0	18	28.02	B	E	ALASKA
01 09 12 (255) 08:03:37.561	56.754	-156.880	55.08	2.7	0.56	5.02	5.68	172.2	34	73.83	D	E	ALASKA PENINSULA
01 09 12 (255) 08:26:23.064	61.477	-146.835	28.32	2.5	0.58	0.71	1.46	44.0	44	46.70	B	E	SOUTHERN ALASKA
01 09 12 (255) 08:49:19.353	58.449	-154.904	8.22	1.6	0.53	0.40	0.32	63.4	25	9.12	A	E	ALASKA PENINSULA
01 09 12 (255) 09:43:42.166	61.501	-149.889	31.47	2.7	0.67	0.59	0.73	48.5	73	16.68	A	E	SOUTHERN ALASKA
01 09 12 (255) 09:46:56.845	61.492	-149.907	36.45	2.1	0.74	0.90	1.12	53.8	51	17.79	A	E	SOUTHERN ALASKA
01 09 12 (255) 10:04:04.400	52.603	-169.333	33.00D	3.8									R FOX ISLANDS, ALEUTIAN IS.
01 09 12 (255) 10:57:28.909	61.776	-149.917	38.03	2.6	0.69	0.78	1.53	45.4	80	14.12	B	E	SOUTHERN ALASKA
01 09 12 (255) 10:58:52.036	54.893	-162.577	99.37	2.7	0.66	6.32	2.89	178.5	29	21.68	D	E	ALASKA PENINSULA
01 09 12 (255) 12:37:15.249	61.553	-151.453	66.62	2.1	0.90	1.94	1.84	45.2	57	40.14	B	E	SOUTHERN ALASKA

01 09 12 (255) 14:37:54.158	61.332	-149.622	35.39	2.0	0.72	1.01	0.93	52.7	28	10.23	A	E	SOUTHERN ALASKA
01 09 12 (255) 14:50:37.630	52.525	-169.303	33.00	5.1							R	R	FOX ISLANDS, ALEUTIAN IS.
01 09 12 (255) 15:10:03.400	52.391	174.051	33.00D	4.4							R	R	NEAR ISLANDS, ALEUTIAN IS.
01 09 12 (255) 15:32:16.127	60.005	-153.004	100.73	2.3	0.59	1.99	1.66	61.2	50	8.78	B	E	SOUTHERN ALASKA
01 09 12 (255) 16:57:37.289	61.486	-146.369	17.35	1.5	0.55	1.63	2.35	140.0	15	23.79	B	E	SOUTHERN ALASKA
01 09 12 (255) 17:50:51.796	61.625	-151.063	76.38	2.2	0.62	1.81	2.39	55.3	35	61.27	B	E	SOUTHERN ALASKA
01 09 12 (255) 21:31:18.590	59.499	-152.794	66.49	2.3	0.69	1.35	1.14	92.9	48	29.91	B	E	SOUTHERN ALASKA
01 09 12 (255) 22:29:06.567	60.629	-151.798	82.61	2.2	0.53	0.81	1.35	69.8	49	33.02	B	E	KENAI PENINSULA, ALASKA
01 09 13 (256) 01:22:17.035	63.127	-150.220	107.08	2.1	0.69	1.46	2.05	59.3	40	58.93	B	E	CENTRAL ALASKA
01 09 13 (256) 01:23:37.180	61.844	-151.399	67.93	1.9	0.90	2.89	4.28	78.7	22	63.27	C	E	SOUTHERN ALASKA
01 09 13 (256) 03:16:33.386	66.015	-147.954	23.46	2.4	0.74	5.65	8.79	129.0	19	118.19	D	E	ALASKA
01 09 13 (256) 06:21:24.240	65.167	-149.274	9.34	1.7	0.67	2.48	2.42	174.0	15	54.15	B	E	ALASKA
01 09 13 (256) 08:25:51.331	54.361	-163.219	57.26	2.9	0.48	2.97	1.78	199.5	53	46.26	C	E	UNIMAK ISLAND REGION
01 09 13 (256) 10:03:19.601	59.834	-153.316	117.70	2.8	0.61	1.31	0.73	57.4	112	20.68	A	E	SOUTHERN ALASKA
01 09 13 (256) 11:24:12.396	60.758	-148.330	0.47	1.7	0.75	0.88	1.56	70.4	32	63.71	B	E	KENAI PENINSULA, ALASKA
01 09 13 (256) 14:40:53.115	60.294	-151.196	48.67	3.3	0.98	0.43	1.01	56.3	128	28.13	A	E	KENAI PENINSULA, ALASKA
01 09 13 (256) 18:25:51.750	61.837	-151.944	0.00G	4.0	1.76	1.08	0.00	52.2	121	58.93	A	E	SOUTHERN ALASKA FELT IN SKWENTNA AND TALKEETNA.
01 09 13 (256) 18:50:51.043	61.839	-152.055	4.66	1.8	0.57	6.23	2.90	106.2	17	48.70	D	E	SOUTHERN ALASKA
01 09 13 (256) 18:59:52.343	61.836	-152.054	0.00G	2.0	0.80	4.33	0.00	103.3	18	48.37	C	E	SOUTHERN ALASKA
01 09 13 (256) 19:18:53.293	60.433	-151.093	56.61	2.0	0.54	1.10	1.99	60.1	39	35.36	B	E	KENAI PENINSULA, ALASKA
01 09 13 (256) 19:48:53.484	59.585	-152.618	76.84	2.0	0.48	1.76	0.72	95.4	52	35.25	B	E	SOUTHERN ALASKA
01 09 13 (256) 19:54:13.677	61.539	-152.023	4.27	1.9	0.60	1.80	0.44	66.0	38	25.80	B	E	SOUTHERN ALASKA
01 09 13 (256) 20:49:24.612	61.941	-152.255	6.57	1.5	0.67	5.79	3.42	237.0	16	59.93	D	E	SOUTHERN ALASKA
01 09 13 (256) 21:14:40.498	63.257	-150.644	141.13	2.2	0.63	1.35	1.86	71.2	49	35.69	B	E	CENTRAL ALASKA
01 09 13 (256) 21:31:28.262	58.484	-150.635	5.00G	2.5	1.59	4.89	0.00	195.3	19	102.85	C	E	GULF OF ALASKA
01 09 13 (256) 21:38:25.842	61.241	-150.665	57.59	1.9	0.57	1.59	2.16	110.0	35	27.58	B	E	SOUTHERN ALASKA
01 09 13 (256) 22:00:23.295	63.314	-149.728	106.16	1.6	0.43	3.14	2.56	83.0	16	37.69	C	E	CENTRAL ALASKA
01 09 13 (256) 23:00:11.005	65.611	-150.542	31.29	1.1	1.04	10.04	17.51	189.0	10	65.16	D	E	ALASKA
01 09 13 (256) 23:37:00.657	61.059	-152.421	110.64	1.9	0.51	2.74	2.30	66.6	34	15.90	C	E	SOUTHERN ALASKA
01 09 14 (257) 01:05:30.206	62.941	-150.767	108.88	2.2	0.75	0.59	0.95	68.0	48	57.26	A	E	CENTRAL ALASKA
01 09 14 (257) 01:36:08.310	60.358	-151.245	55.53	1.3	0.79	0.30	0.63	97.0	25	34.91	A	E	KENAI PENINSULA, ALASKA
01 09 14 (257) 01:50:46.634	65.406	-150.073	15.00G	1.6	1.29	3.79	0.00	181.0	15	52.04	C	E	ALASKA
01 09 14 (257) 02:52:13.878	61.120	-140.543	0.00G	3.1	1.43	1.14	0.00	202.0	41	46.03	A	E	SOUTHERN YUKON TERRI- TORY, CANADA
01 09 14 (257) 03:22:23.741	59.303	-155.208	3.32	2.8	1.31	0.87	0.45	154.1	66	10.01	A	E	SOUTHERN ALASKA
01 09 14 (257) 04:45:53.195	60.290	-152.228	76.61	2.4	0.97	0.11	0.24	52.3	85	33.02	A	E	SOUTHERN ALASKA
01 09 14 (257) 04:49:10.477	58.291	-154.976	-2.26	1.3	0.33	0.08	0.35	130.9	32	7.89	A	E	ALASKA PENINSULA
01 09 14 (257) 05:11:20.750	61.560	-149.741	36.45	1.6	0.59	0.40	0.98	77.0	32	12.45	A	E	SOUTHERN ALASKA
01 09 14 (257) 07:52:57.617	50.086	-178.671	51.14	3.4	1.79	21.09	92.84	347.0	19	211.82	D	E	ANDREANOF IS., ALEUTIAN IS.
01 09 14 (257) 08:06:00.965	52.875	-166.512	5.00G	2.6	0.40	12.14	0.00	309.9	30	104.96	D	E	FOX ISLANDS, ALEUTIAN IS.
01 09 14 (257) 08:11:35.652	62.858	-150.563	84.54	1.7	0.44	1.01	0.49	65.7	28	48.81	A	E	CENTRAL ALASKA
01 09 14 (257) 11:29:20.899	61.332	-150.126	11.43	1.2	0.47	3.53	2.47	154.2	19	31.69	C	E	SOUTHERN ALASKA
01 09 14 (257) 15:23:59.487	63.622	-149.784	131.60	3.5	0.67	0.22	0.29	63.5	114	43.59	A	E	CENTRAL ALASKA
01 09 14 (257) 16:47:54.153	60.725	-151.642	121.67	1.6	1.63	2.35	1.98	245.0	14	44.92	B	E	KENAI PENINSULA, ALASKA
01 09 14 (257) 17:52:47.046	59.519	-152.708	75.19	1.9	1.11	1.93	0.90	94.6	53	32.91	B	E	SOUTHERN ALASKA
01 09 14 (257) 18:56:58.066	52.320	-164.323	73.50	3.1	0.68	16.55	95.68	318.0	23	219.04	D	E	SOUTH OF ALASKA
01 09 14 (257) 19:20:38.815	62.846	-148.185	63.07	2.0	0.73	1.15	3.32	48.2	33	70.83	C	E	CENTRAL ALASKA
01 09 14 (257) 19:50:50.977	60.142	-152.775	88.09	1.9	0.80	2.89	1.18	113.8	30	12.34	C	E	SOUTHERN ALASKA
01 09 14 (257) 21:09:32.236	63.464	-151.287	3.17	1.9	1.29	3.99	3.21	81.0	30	119.08	C	E	CENTRAL ALASKA
01 09 14 (257) 23:52:31.617	53.821	-162.286	176.88	2.9	1.30	6.69	4.35	271.6	13	127.31	D	E	SOUTH OF ALASKA
01 09 15 (258) 00:35:50.067	59.300	-153.614	103.31	2.0	0.57	2.81	1.73	142.0	46	11.23	C	E	SOUTHERN ALASKA
01 09 15 (258) 00:37:05.742	59.975	-153.690	157.43	2.4	0.57	1.34	1.12	105.6	71	36.14	A	E	SOUTHERN ALASKA
01 09 15 (258) 00:39:44.946	61.495	-150.324	54.54	1.5	0.47	2.76	3.44	161.0	29	49.26	C	E	SOUTHERN ALASKA
01 09 15 (258) 02:53:42.414	61.742	-149.975	-3.03	1.8	1.02	0.85	0.98	68.0	44	47.59	A	E	SOUTHERN ALASKA
01 09 15 (258) 04:31:04.440	53.668	-165.870	15.37	3.5	0.29	3.32	1.93	233.5	34	46.03	C	E	FOX ISLANDS, ALEUTIAN IS.
01 09 15 (258) 05:03:54.368	61.295	-150.501	5.17	1.2	0.98	1.53	1.59	138.0	27	39.36	B	E	SOUTHERN ALASKA
01 09 15 (258) 05:13:32.865	59.922	-152.875	98.83	1.7	0.53	2.11	1.75	75.5	28	18.24	B	E	SOUTHERN ALASKA
01 09 15 (258) 05:52:56.259	60.214	-150.566	47.06	1.5	0.64	1.43	1.51	99.2	27	38.14	B	E	KENAI PENINSULA, ALASKA
01 09 15 (258) 06:45:07.800	60.050	-151.036	44.82	1.5	0.43	1.90	3.39	92.0	19	14.01	C	E	KENAI PENINSULA, ALASKA
01 09 15 (258) 06:48:42.110	60.209	-151.135	69.24	1.3	0.64	1.31	2.00	77.0	23	20.24	B	E	KENAI PENINSULA, ALASKA
01 09 15 (258) 07:14:18.839	55.423	-162.154	165.10	3.0	0.66	4.08	4.28	127.0	26	9.90	C	E	ALASKA PENINSULA
01 09 15 (258) 07:53:14.918	61.664	-148.519	6.05	1.2	0.85	0.74	1.00	91.0	17	18.79	A	E	SOUTHERN ALASKA
01 09 15 (258) 07:58:30.086	62.023	-147.773	37.90	1.5	0.71	2.00	1.55	78.0	29	31.47	B	E	CENTRAL ALASKA
01 09 15 (258) 08:04:20.695	58.252	-142.800	5.00G	2.4	0.94	5.37	0.00	219.3	36	203.26	D	E	GULF OF ALASKA
01 09 15 (258) 10:05:21.969	60.773	-151.780	83.95	1.5	0.50	1.29	1.54	68.7	43	40.70	B	E	KENAI PENINSULA, ALASKA
01 09 15 (258) 10:18:05.234	53.843	-165.702	62.71	2.2	0.33	7.19	1.92	214.6	29	29.69	D	E	FOX ISLANDS, ALEUTIAN IS.
01 09 15 (258) 10:29:23.225	61.846	-149.587	37.06	2.4	0.66	0.55	1.01	38.2	71	26.57	A	E	SOUTHERN ALASKA

01 09 15 (258) 10:35:34.976	61.496	-146.519	28.31	2.4	0.52	0.61	1.32	60.0	48	31.80	A	E	SOUTHERN ALASKA
01 09 15 (258) 12:26:38.523	64.267	-149.896	7.36	1.7	1.10	1.32	2.00	72.2	24	52.26	B	E	CENTRAL ALASKA
01 09 15 (258) 16:59:39.523	61.677	-150.296	6.89	1.7	0.91	0.96	1.29	97.9	28	22.24	A	E	SOUTHERN ALASKA
01 09 15 (258) 18:48:38.705	64.704	-147.842	23.53	1.1	0.66	1.49	0.60	81.0	12	6.56	B	E	CENTRAL ALASKA
01 09 15 (258) 18:48:50.459	64.706	-147.853	19.07	1.2	0.67	1.58	0.97	80.4	14	7.00	B	E	CENTRAL ALASKA
01 09 15 (258) 18:57:36.289	58.473	-142.699	5.00G	2.8	0.72	7.73	0.00	213.2	46	178.02	D	E	GULF OF ALASKA
01 09 15 (258) 19:39:42.236	51.422	-177.512	6.29	1.5	0.52	7.77	1.76	327.0	21	42.36	D	E	ANDREANOF IS., ALEUTIAN IS.
01 09 15 (258) 20:21:36.912	59.898	-153.487	126.12	2.2	0.57	1.12	1.48	66.9	42	30.80	B	E	SOUTHERN ALASKA
01 09 15 (258) 23:08:00.463	60.142	-152.473	71.74	1.5	0.80	2.03	3.01	83.9	21	27.80	C	E	SOUTHERN ALASKA
01 09 16 (259) 01:39:16.836	54.638	-162.662	86.36	N/A	0.45	4.16	2.09	225.8	25	44.59	C	E	ALASKA PENINSULA
01 09 16 (259) 01:58:42.627	63.300	-151.180	14.74	2.0	1.03	1.89	0.55	76.9	28	30.91	B	E	CENTRAL ALASKA
01 09 16 (259) 02:47:37.286	60.466	-145.042	27.71	1.2	0.58	0.19	0.94	146.0	24	45.25	A	E	SOUTHERN ALASKA
01 09 16 (259) 03:07:25.396	59.070	-153.022	63.31	1.8	0.83	4.30	3.24	96.4	27	37.47	C	E	SOUTHERN ALASKA
01 09 16 (259) 03:54:21.537	63.218	-151.188	-2.21	1.7	1.01	0.55	0.22	101.0	34	39.58	A	E	CENTRAL ALASKA
01 09 16 (259) 04:48:12.880	42.993	146.882	33.00	N/A							R		OFF COAST OF HOKKAIDO, JAPAN
01 09 16 (259) 07:45:36.055	60.861	-150.793	34.12	1.2	0.68	0.74	1.86	153.9	17	47.59	B	E	KENAI PENINSULA, ALASKA
01 09 16 (259) 08:17:03.849	62.184	-151.318	86.82	2.0	0.51	0.22	0.37	55.0	49	59.49	A	E	CENTRAL ALASKA
01 09 16 (259) 08:28:09.714	60.068	-150.307	47.71	1.3	0.57	0.51	0.94	136.5	17	46.81	A	E	KENAI PENINSULA, ALASKA
01 09 16 (259) 08:53:56.469	61.661	-150.618	12.03	3.2	1.29	0.18	0.88	44.9	102	39.03	A	E	SOUTHERN ALASKA
01 09 16 (259) 09:30:51.525	60.870	-150.406	49.84	1.0	0.55	1.70	3.58	129.0	17	35.25	C	E	KENAI PENINSULA, ALASKA
01 09 16 (259) 10:26:55.657	60.152	-152.407	83.97	1.7	0.79	1.43	0.56	103.5	30	31.69	B	E	SOUTHERN ALASKA
01 09 16 (259) 11:11:42.283	53.856	-165.689	58.81	3.0	0.39	1.65	0.75	205.9	50	28.24	B	E	FOX ISLANDS, ALEUTIAN IS.
01 09 16 (259) 11:22:35.471	59.767	-151.992	46.06	2.0	0.57	0.28	0.44	68.7	49	22.91	A	E	KENAI PENINSULA, ALASKA
01 09 16 (259) 11:33:56.073	61.630	-150.639	6.09	1.8	1.02	0.35	0.34	59.6	49	40.25	A	E	SOUTHERN ALASKA
01 09 16 (259) 11:48:30.838	61.349	-146.775	31.48	1.2	0.45	0.38	0.64	64.8	21	33.69	A	E	SOUTHERN ALASKA
01 09 16 (259) 13:36:00.999	59.807	-152.120	72.77	1.5	0.84	1.15	2.53	166.2	21	53.26	B	E	SOUTHERN ALASKA
01 09 16 (259) 15:40:20.230	61.068	-146.416	16.09	2.1	1.17	0.12	0.12	36.1	46	8.45	A	E	SOUTHERN ALASKA
01 09 16 (259) 16:04:05.735	57.740	-155.525	87.12	2.4	0.49	1.46	0.63	151.3	60	35.02	B	E	ALASKA PENINSULA
01 09 16 (259) 16:11:02.400	56.693	-136.151	10.00G	N/A							R		OFF COAST OF SOUTHEASTERN ALASKA
01 09 16 (259) 16:17:44.987	59.761	-153.621	141.06	2.3	0.74	3.82	1.50	190.2	23	133.76	C	E	SOUTHERN ALASKA
01 09 16 (259) 16:33:00.440	63.509	-151.423	9.88	1.9	0.81	0.40	0.30	114.0	27	25.35	A	E	CENTRAL ALASKA
01 09 16 (259) 16:39:01.550	60.687	-151.932	96.62	1.8	0.67	2.18	1.99	82.9	43	28.69	B	E	KENAI PENINSULA, ALASKA
01 09 16 (259) 17:02:04.131	60.348	-152.159	85.22	1.5	0.57	0.99	1.31	70.3	39	28.46	A	E	SOUTHERN ALASKA
01 09 16 (259) 17:17:48.244	61.831	-148.113	33.73	1.4	0.50	0.66	0.47	118.0	28	11.90	A	E	SOUTHERN ALASKA
01 09 16 (259) 17:57:57.363	61.446	-151.785	94.22	1.2	1.11	1.92	1.48	192.0	17	20.35	B	E	SOUTHERN ALASKA
01 09 16 (259) 19:06:57.647	61.129	-151.024	70.23	1.5	0.55	15.38	9.79	293.0	12	55.59	D	E	SOUTHERN ALASKA
01 09 16 (259) 21:02:42.947	54.550	-161.713	-1.21	2.7	0.88	2.09	1.04	216.9	42	58.26	B	E	ALASKA PENINSULA
01 09 16 (259) 22:24:37.108	60.294	-150.952	69.90	2.0	0.66	0.82	1.18	73.0	48	33.47	A	E	KENAI PENINSULA, ALASKA
01 09 16 (259) 23:02:17.066	60.808	-145.740	15.04	1.7	0.37	0.44	0.76	42.0	30	29.02	A	E	SOUTHERN ALASKA
01 09 17 (260) 00:14:41.330	58.175	-155.371	-0.82	1.3	0.13	0.55	10.84	80.0	16	4.78	D	E	ALASKA PENINSULA
01 09 17 (260) 01:54:30.252	60.178	-153.301	138.98	2.3	0.54	2.16	0.97	147.7	63	18.57	B	E	SOUTHERN ALASKA
01 09 17 (260) 02:44:37.889	63.166	-144.629	10.49	1.1	0.61	1.67	2.10	120.3	10	47.59	B	E	CENTRAL ALASKA
01 09 17 (260) 02:46:18.881	51.399	-177.589	2.87	1.1	0.62	12.12	4.54	328.0	26	47.14	D	E	ANDREANOF IS., ALEUTIAN IS.
01 09 17 (260) 05:12:31.638	60.578	-150.992	53.46	1.8	0.73	1.08	2.73	60.0	40	42.81	C	E	KENAI PENINSULA, ALASKA
01 09 17 (260) 05:34:26.310	52.374	-169.101	33.00	4.4							R		FOX ISLANDS, ALEUTIAN IS.
01 09 17 (260) 06:07:08.156	59.982	-152.758	86.89	1.8	0.66	1.40	1.48	89.9	35	15.68	B	E	SOUTHERN ALASKA
01 09 17 (260) 06:46:04.912	60.217	-151.668	65.09	1.9	0.58	1.42	1.90	56.7	34	28.46	B	E	KENAI PENINSULA, ALASKA
01 09 17 (260) 07:23:40.541	60.034	-152.118	66.53	1.5	0.65	1.64	1.61	97.7	31	46.03	B	E	SOUTHERN ALASKA
01 09 17 (260) 10:00:46.746	64.419	-147.325	18.54	1.3	0.67	0.76	0.95	161.5	13	18.57	A	E	CENTRAL ALASKA
01 09 17 (260) 10:08:38.326	61.724	-150.675	35.95	1.8	0.76	1.95	5.16	83.5	25	42.81	C	E	SOUTHERN ALASKA
01 09 17 (260) 11:26:47.618	60.233	-152.231	30.31	1.3	0.42	2.00	2.33	106.4	21	38.47	B	E	SOUTHERN ALASKA
01 09 17 (260) 14:24:02.686	61.565	-149.910	34.84	3.5	0.69	0.49	1.08	42.8	107	9.67	A	E	SOUTHERN ALASKA
01 09 17 (260) 14:27:40.844	60.309	-152.523	100.36	1.8	0.70	1.55	1.31	88.5	42	18.46	B	E	SOUTHERN ALASKA
01 09 17 (260) 14:42:55.990	61.984	-148.852	9.95	1.3	0.88	0.86	0.72	101.0	18	23.91	A	E	SOUTHERN ALASKA
01 09 17 (260) 16:14:41.845	64.313	-148.295	18.37	1.7	0.78	0.56	0.59	67.7	22	20.24	A	E	CENTRAL ALASKA
01 09 17 (260) 17:30:49.406	51.412	-177.588	7.30	1.7	0.46	5.57	3.24	330.0	21	45.81	D	E	ANDREANOF IS., ALEUTIAN IS.
01 09 17 (260) 19:35:38.978	61.587	-149.964	37.51	1.4	0.67	1.53	2.30	89.2	25	8.34	B	E	SOUTHERN ALASKA
01 09 17 (260) 20:03:42.011	60.589	-151.061	63.70	1.4	0.54	1.81	3.18	88.0	27	46.70	C	E	KENAI PENINSULA, ALASKA
01 09 17 (260) 20:16:30.598	65.519	-148.200	25.68	1.3	1.05	1.95	10.16	111.0	16	62.27	D	E	ALASKA
01 09 17 (260) 20:36:43.091	53.178	-165.597	16.48	2.5	0.37	5.79	7.66	262.8	26	95.40	D	E	FOX ISLANDS, ALEUTIAN IS.
01 09 17 (260) 21:32:39.786	60.088	-147.088	17.68	2.1	0.52	2.94	1.19	198.4	37	42.81	C	E	SOUTHERN ALASKA
01 09 17 (260) 23:00:26.024	60.816	-151.799	79.10	1.8	0.49	1.13	1.34	76.0	46	31.47	B	E	KENAI PENINSULA, ALASKA
01 09 18 (261) 00:33:57.510	59.552	-152.750	74.89	3.4	0.67	0.62	0.61	77.4	141	29.24	A	E	SOUTHERN ALASKA
01 09 18 (261) 01:15:37.360	65.307	-148.482	9.43	1.9	1.03	1.03	0.67	104.0	26	40.47	A	E	ALASKA
01 09 18 (261) 02:42:40.981	63.795	-145.304	10.00G	2.5	1.11	0.77	0.00	115.0	35	47.48	A	E	CENTRAL ALASKA
01 09 18 (261) 02:49:59.231	61.360	-150.730	47.08	1.5	0.54	1.12	2.16	67.0	31	63.82	B	E	SOUTHERN ALASKA

01 09 18 (261) 03:36:58.109	51.472	-177.541	13.92	0.9	0.39	8.75	6.97	326.0	23	38.47	D	E	ANDREANOF IS., ALEUTIAN IS.
01 09 18 (261) 04:10:45.611	60.385	-153.420	154.13	1.8	0.44	2.78	1.14	132.4	25	33.58	C	E	SOUTHERN ALASKA
01 09 18 (261) 04:38:59.628	51.601	-176.876	10.83	0.6	0.38	2.04	1.13	249.7	24	30.47	B	E	ANDREANOF IS., ALEUTIAN IS.
01 09 18 (261) 05:37:51.214	61.118	-151.432	73.57	1.5	0.60	1.62	2.21	108.0	32	34.14	B	E	SOUTHERN ALASKA
01 09 18 (261) 05:44:13.462	60.267	-153.132	100.80	1.6	0.66	3.01	1.52	150.4	19	22.79	C	E	SOUTHERN ALASKA
01 09 18 (261) 05:45:59.526	62.764	-150.749	77.41	1.4	0.38	1.80	1.03	72.0	15	46.92	B	E	CENTRAL ALASKA
01 09 18 (261) 07:00:15.190	54.562	-162.452	6.05	N/A	0.65	3.22	1.11	212.3	29	46.48	C	E	ALASKA PENINSULA
01 09 18 (261) 08:41:20.888	60.528	-151.805	76.86	1.6	0.53	1.21	1.52	67.8	32	33.13	B	E	KENAI PENINSULA, ALASKA
01 09 18 (261) 08:50:11.896	59.928	-151.937	47.13	1.3	0.93	1.41	2.22	95.2	27	38.25	B	E	KENAI PENINSULA, ALASKA
01 09 18 (261) 08:52:10.991	59.524	-153.743	115.04	1.9	0.68	1.66	1.38	106.0	66	23.57	B	E	SOUTHERN ALASKA
01 09 18 (261) 10:04:33.131	60.130	-151.142	61.12	1.7	0.60	1.15	1.56	69.2	37	12.56	B	E	KENAI PENINSULA, ALASKA
01 09 18 (261) 11:55:40.329	59.766	-152.411	65.03	1.4	0.77	1.31	2.12	120.0	24	44.70	B	E	SOUTHERN ALASKA
01 09 18 (261) 12:01:39.911	60.877	-150.387	43.60	1.5	0.59	0.80	2.44	67.9	30	41.59	B	E	KENAI PENINSULA, ALASKA
01 09 18 (261) 12:44:33.006	61.366	-141.334	1.00G	1.9	1.59	2.76	0.00	233.0	20	44.48	C	E	SOUTHERN ALASKA
01 09 18 (261) 12:59:59.166	60.383	-148.965	33.00	3.0	0.65	0.41	0.62	95.8	101	24.68	A	E	KENAI PENINSULA, ALASKA
01 09 18 (261) 14:29:16.110	54.738	-161.773	4.26	2.3	0.82	2.87	1.44	204.1	30	40.36	C	E	ALASKA PENINSULA
01 09 18 (261) 16:24:25.841	62.748	-148.814	57.57	1.9	0.65	0.63	1.46	38.7	46	48.92	B	E	CENTRAL ALASKA
01 09 18 (261) 16:27:08.728	60.544	-141.645	4.05	1.9	0.89	0.84	1.04	60.9	25	21.35	A	E	SOUTHEASTERN ALASKA
01 09 18 (261) 19:31:37.530	58.518	-153.784	72.93	2.2	0.54	1.12	1.09	99.9	60	33.80	A	E	KODIAK ISLAND REGION
01 09 18 (261) 19:59:28.732	60.217	-149.860	41.01	2.0	0.40	1.21	1.19	106.9	31	25.91	A	E	KENAI PENINSULA, ALASKA
01 09 18 (261) 20:16:10.431	60.224	-149.837	39.97	1.7	0.51	1.09	1.26	104.2	30	25.13	A	E	KENAI PENINSULA, ALASKA
01 09 18 (261) 21:47:41.504	62.179	-153.129	1.00G	2.1	1.15	2.10	0.00	70.9	36	100.18	B	E	CENTRAL ALASKA
01 09 19 (262) 01:15:11.614	60.027	-152.619	90.64	1.3	0.55	1.88	1.54	127.9	22	26.13	B	E	SOUTHERN ALASKA
01 09 19 (262) 03:04:53.590	61.082	-150.253	52.43	1.1	0.44	0.94	2.05	87.0	21	41.36	B	E	SOUTHERN ALASKA
01 09 19 (262) 03:40:03.406	61.417	-146.819	11.53	1.9	0.54	0.44	0.58	31.5	48	40.92	A	E	SOUTHERN ALASKA
01 09 19 (262) 04:14:12.441	54.031	-163.064	-1.06	1.9	0.92	1.58	1.03	234.8	33	81.17	B	E	UNIMAK ISLAND REGION
01 09 19 (262) 05:38:57.615	60.340	-148.321	10.00	0.3	0.45	2.84	13.68	105.6	8	42.14	D	E	KENAI PENINSULA, ALASKA
01 09 19 (262) 06:07:18.467	61.380	-141.464	1.00G	2.0	1.32	2.61	0.00	232.0	22	60.82	B	E	SOUTHERN ALASKA
01 09 19 (262) 06:23:18.822	59.569	-151.658	51.43	2.0	0.70	0.90	1.26	155.0	37	10.01	A	E	KENAI PENINSULA, ALASKA
01 09 19 (262) 06:42:24.149	60.313	-153.805	1.00G	2.0	0.75	0.78	0.00	110.5	27	52.48	A	E	SOUTHERN ALASKA
01 09 19 (262) 07:16:47.049	61.349	-141.418	1.00G	1.6	1.34	1.83	0.00	231.0	15	60.82	B	E	SOUTHERN ALASKA
01 09 19 (262) 07:49:10.355	60.284	-150.151	32.36	2.2	0.57	0.21	0.60	98.7	39	43.59	A	E	KENAI PENINSULA, ALASKA
01 09 19 (262) 08:16:59.483	60.161	-140.741	7.62	1.9	1.04	0.95	0.30	152.0	18	23.46	A	E	SOUTHEASTERN ALASKA
01 09 19 (262) 08:33:04.292	61.740	-147.929	21.45	0.9	0.72	0.66	0.85	99.0	24	22.57	A	E	SOUTHERN ALASKA
01 09 19 (262) 12:46:31.900	58.272	-155.553	7.79	1.7	0.54	0.07	0.07	84.8	32	8.78	A	E	ALASKA PENINSULA
01 09 19 (262) 13:53:27.375	60.499	-141.280	4.20	1.9	0.82	0.39	0.64	126.0	24	29.91	A	E	SOUTHEASTERN ALASKA
01 09 19 (262) 14:40:04.466	57.882	-155.303	77.33	1.8	0.43	1.30	1.36	227.6	28	19.01	B	E	ALASKA PENINSULA
01 09 19 (262) 14:46:26.012	59.703	-152.809	83.28	2.1	0.62	0.22	0.44	66.8	74	24.24	A	E	SOUTHERN ALASKA
01 09 19 (262) 15:35:02.870	60.747	-150.765	54.79	1.3	0.67	1.17	1.83	164.0	13	39.47	B	E	KENAI PENINSULA, ALASKA
01 09 19 (262) 16:48:53.041	53.893	-163.039	4.00	3.1	0.38	0.91	4.67	224.6	36	95.29	C	E	UNIMAK ISLAND REGION
01 09 19 (262) 17:07:18.183	61.374	-140.193	9.54	3.0	1.44	1.05	1.27	182.0	41	76.39	A	E	SOUTHERN YUKON TERRI- TORY, CANADA
01 09 19 (262) 17:22:30.650	51.120	179.277	33.00	4.4								R	RAT ISLANDS, ALEUTIAN IS.
01 09 19 (262) 19:41:22.977	59.954	-152.273	51.55	1.1	0.82	1.23	2.73	91.1	29	40.58	C	E	SOUTHERN ALASKA
01 09 19 (262) 21:08:44.033	61.042	-152.455	106.69	1.1	0.56	3.09	2.74	162.0	19	18.35	C	E	SOUTHERN ALASKA
01 09 19 (262) 21:26:22.334	61.262	-152.052	12.84	0.5	0.71	1.11	0.82	154.9	17	5.56	A	E	SOUTHERN ALASKA
01 09 19 (262) 21:31:10.326	59.821	-153.430	117.90	1.6	0.54	2.09	1.52	162.0	34	21.79	B	E	SOUTHERN ALASKA
01 09 19 (262) 22:21:07.897	61.010	-147.733	14.10	1.5	0.81	0.28	0.55	53.9	27	37.36	A	E	SOUTHERN ALASKA
01 09 19 (262) 22:51:48.907	61.241	-151.364	80.60	1.5	0.70	0.36	0.58	39.0	54	35.14	A	E	SOUTHERN ALASKA
01 09 19 (262) 23:19:32.740	61.527	-148.119	20.06	2.0	0.70	0.29	0.80	35.7	41	21.90	A	E	SOUTHERN ALASKA
01 09 19 (262) 23:38:50.004	60.195	-152.830	99.97	1.7	0.41	1.49	2.24	71.3	29	19.68	B	E	SOUTHERN ALASKA
01 09 19 (262) 23:50:41.687	61.125	-150.538	3.66	1.7	1.03	0.71	1.80	75.0	36	54.04	B	E	SOUTHERN ALASKA
01 09 20 (263) 00:07:02.907	62.259	-151.426	86.78	1.7	0.51	1.35	1.93	57.6	34	61.82	B	E	CENTRAL ALASKA
01 09 20 (263) 00:36:36.427	60.094	-153.245	141.64	2.0	0.34	2.57	2.98	99.4	20	49.03	C	E	SOUTHERN ALASKA
01 09 20 (263) 01:11:17.614	60.435	-152.520	89.79	1.5	0.50	2.16	1.63	47.4	35	11.67	B	E	SOUTHERN ALASKA
01 09 20 (263) 02:20:00.616	63.166	-152.232	1.00G	1.4	1.18	4.83	0.00	84.6	18	78.28	C	E	CENTRAL ALASKA
01 09 20 (263) 03:30:05.262	60.261	-153.129	134.98	1.6	0.26	2.83	2.33	94.4	28	22.57	C	E	SOUTHERN ALASKA
01 09 20 (263) 04:39:50.708	53.593	-166.141	85.38	2.5	0.57	9.35	2.35	238.1	40	36.80	D	E	FOX ISLANDS, ALEUTIAN IS.
01 09 20 (263) 05:50:59.563	60.267	-140.916	1.70	1.9	0.97	1.47	1.24	123.0	22	25.24	B	E	SOUTHEASTERN ALASKA
01 09 20 (263) 06:16:17.394	61.564	-146.342	20.07	1.4	0.69	0.53	1.13	75.0	45	23.68	A	E	SOUTHERN ALASKA
01 09 20 (263) 06:30:00.228	60.660	-151.396	67.80	1.2	0.65	1.28	2.20	69.0	35	12.56	B	E	KENAI PENINSULA, ALASKA
01 09 20 (263) 06:42:47.223	63.165	-150.576	128.46	1.9	0.59	2.49	1.65	69.2	38	46.48	B	E	CENTRAL ALASKA
01 09 20 (263) 06:42:58.295	64.142	-147.480	103.13	1.6	0.41	4.74	2.46	156.8	14	39.14	C	E	CENTRAL ALASKA
01 09 20 (263) 08:58:47.527	61.639	-148.254	14.03	0.9	0.58	1.37	0.72	78.0	17	19.35	B	E	SOUTHERN ALASKA
01 09 20 (263) 11:31:55.417	59.579	-152.729	86.65	1.8	0.63	0.92	1.32	76.3	53	29.24	A	E	SOUTHERN ALASKA
01 09 20 (263) 13:55:49.044	60.047	-151.898	78.14	1.7	0.59	1.26	1.58	74.9	31	33.80	B	E	KENAI PENINSULA, ALASKA
01 09 20 (263) 15:38:41.649	59.248	-150.688	69.85	1.6	0.49	9.39	5.71	279.6	7	43.81	D	E	KENAI PENINSULA, ALASKA

01 09 20 (263) 15:40:35.665	60.456	-150.969	12.23		1.6	0.70	0.51	0.63	67.2	38	35.14	A	E	KENAI PENINSULA, ALASKA
01 09 20 (263) 15:49:56.403	59.792	-153.417	121.19		1.9	0.27	3.19	4.15	162.0	25	18.79	C	E	SOUTHERN ALASKA
01 09 20 (263) 16:22:07.436	59.681	-153.149	95.70		2.1	0.68	1.58	1.57	103.3	43	5.56	B	E	SOUTHERN ALASKA
01 09 20 (263) 18:08:25.213	65.423	-150.060	10.00G		1.8	1.15	2.40	0.00	113.0	18	53.93	B	E	ALASKA
01 09 20 (263) 18:38:18.055	65.241	-149.258	10.00G		1.3	1.19	3.33	0.00	104.0	19	57.49	C	E	ALASKA
01 09 20 (263) 19:54:56.941	59.612	-152.447	66.89		2.2	0.63	1.08	1.75	80.8	48	44.14	B	E	SOUTHERN ALASKA
01 09 20 (263) 21:39:53.725	63.135	-150.813	134.60		1.8	0.62	1.41	1.92	102.0	37	46.81	B	E	CENTRAL ALASKA
01 09 20 (263) 22:12:08.392	61.726	-149.968	1.00G		1.3	1.52	1.57	0.00	102.4	22	9.67	B	E	SOUTHERN ALASKA
01 09 20 (263) 22:13:55.424	59.571	-151.935	31.47		2.2	0.72	2.13	2.91	158.6	21	39.69	C	E	KENAI PENINSULA, ALASKA
01 09 20 (263) 23:18:09.572	59.951	-148.986	1.00G		1.8	0.79	1.50	0.00	169.8	22	30.91	B	E	KENAI PENINSULA, ALASKA
01 09 21 (264) 00:39:19.078	64.706	-149.140	12.11		1.3	1.11	0.73	0.42	120.0	17	14.68	A	E	CENTRAL ALASKA
01 09 21 (264) 01:06:03.767	61.240	-143.592	11.69		1.2	0.35	1.75	2.10	135.0	10	25.35	B	E	SOUTHERN ALASKA
01 09 21 (264) 08:24:34.608	51.544	-177.596	8.02		2.2	0.45	2.45	0.91	330.0	17	34.69	B	E	ANDREANOF IS., ALEUTIAN IS.
01 09 21 (264) 11:29:23.294	52.538	-175.657	117.01		2.4	0.79	17.70	1.29	342.0	12	56.48	D	E	ANDREANOF IS., ALEUTIAN IS.
01 09 21 (264) 11:58:04.521	58.117	-143.354	15.00G		3.2	1.17	1.69	0.00	185.8	73	210.26	B	E	GULF OF ALASKA
01 09 21 (264) 12:40:03.232	61.031	-152.406	113.60		2.4	0.83	0.94	1.07	58.1	66	18.79	A	E	SOUTHERN ALASKA
01 09 21 (264) 13:31:48.600	61.428	-151.377	81.62		2.0	0.94	1.68	1.15	82.0	35	36.14	B	E	SOUTHERN ALASKA
01 09 21 (264) 17:24:39.659	61.581	-150.001	37.62		2.5	0.81	0.39	0.53	50.3	70	10.12	A	E	SOUTHERN ALASKA
01 09 21 (264) 18:05:27.222	61.505	-146.610	36.74		1.8	0.51	0.48	0.84	33.3	30	36.69	A	E	SOUTHERN ALASKA
01 09 21 (264) 19:32:37.378	61.612	-149.957	43.71		1.5	0.55	5.55	2.09	171.0	14	43.70	D	E	SOUTHERN ALASKA
01 09 21 (264) 19:35:44.637	61.053	-146.437	21.04		1.3	0.80	0.70	0.39	57.0	20	8.67	A	E	SOUTHERN ALASKA
01 09 21 (264) 23:56:39.770	51.899	-175.353	33.00	5.5										R ANDREANOF IS., ALEUTIAN IS. FELT ON ADAK AND ATKA.
01 09 22 (265) 00:54:23.999	51.547	-175.289	2.88		2.7	0.58	15.38	6.97	321.0	16	65.60	D	E	ANDREANOF IS., ALEUTIAN IS.
01 09 22 (265) 02:33:30.290	61.373	-150.344	5.71		1.2	1.07	1.00	1.21	97.1	23	35.47	A	E	SOUTHERN ALASKA
01 09 22 (265) 03:40:38.598	60.096	-153.251	136.53		2.5	0.55	1.60	1.13	74.8	52	49.37	B	E	SOUTHERN ALASKA
01 09 22 (265) 03:52:43.623	59.212	-153.609	102.73		2.2	0.41	1.65	1.41	78.8	36	17.12	B	E	SOUTHERN ALASKA
01 09 22 (265) 05:05:23.718	57.884	-153.291	47.01		2.5	0.29	2.27	4.30	174.2	26	43.36	C	E	KODIAK ISLAND REGION
01 09 22 (265) 05:13:28.752	51.419	-176.959	7.85		1.5	0.31	3.82	1.40	285.4	23	42.59	C	E	ANDREANOF IS., ALEUTIAN IS.
01 09 22 (265) 06:28:09.765	60.084	-150.965	39.04		1.8	0.56	1.39	2.11	85.5	25	18.46	B	E	KENAI PENINSULA, ALASKA
01 09 22 (265) 06:48:05.370	55.879	-154.531	33.00	4.9										R SOUTH OF ALASKA
01 09 22 (265) 07:10:04.100	59.944	-142.470	33.00D	3.8										R GULF OF ALASKA
01 09 22 (265) 07:43:16.342	60.447	-144.947	1.00G		2.6	1.07	0.92	0.00	141.7	45	16.34	A	E	SOUTHERN ALASKA
01 09 22 (265) 09:07:10.941	60.208	-152.096	81.32		3.0	0.65	0.57	0.69	50.0	123	44.03	A	E	SOUTHERN ALASKA
01 09 22 (265) 10:49:02.932	60.437	-142.980	0.10		2.2	0.87	1.30	1.15	97.8	32	29.69	A	E	SOUTHERN ALASKA
01 09 22 (265) 11:01:03.312	61.916	-152.121	1.00G		1.8	1.45	3.04	0.00	114.5	20	56.93	C	E	SOUTHERN ALASKA
01 09 22 (265) 12:02:17.764	60.116	-153.213	125.95		2.4	0.46	0.95	0.85	74.4	71	41.59	A	E	SOUTHERN ALASKA
01 09 22 (265) 12:53:48.072	63.030	-148.765	74.27		2.7	0.77	0.65	0.79	29.0	75	42.03	A	E	CENTRAL ALASKA
01 09 22 (265) 14:14:55.300	61.600	-149.296	23.88		1.6	0.81	0.97	0.87	50.1	35	8.78	A	E	SOUTHERN ALASKA
01 09 22 (265) 14:20:50.393	63.480	-151.067	12.60		1.9	0.58	3.27	0.77	95.8	25	10.90	C	E	CENTRAL ALASKA
01 09 22 (265) 14:37:16.388	63.083	-150.897	136.60		3.2	0.67	0.58	0.83	70.4	109	52.37	A	E	CENTRAL ALASKA
01 09 22 (265) 15:45:22.490	59.932	-152.745	94.91		2.0	0.36	1.93	1.95	92.9	35	41.25	B	E	SOUTHERN ALASKA
01 09 22 (265) 18:50:04.203	54.297	-164.800	95.50		2.3	0.38	9.64	2.55	186.3	35	20.90	D	E	UNIMAK ISLAND REGION
01 09 22 (265) 18:50:51.476	51.553	-175.316	7.05		0.0	0.38	10.16	4.54	320.0	14	63.82	D	E	ANDREANOF IS., ALEUTIAN IS.
01 09 22 (265) 21:21:55.162	61.516	-146.635	31.66		3.5	0.62	0.43	0.69	23.0	95	38.03	A	E	SOUTHERN ALASKA
01 09 23 (266) 01:15:41.377	62.149	-151.258	77.15		2.1	0.54	0.93	1.34	54.1	51	58.49	B	E	CENTRAL ALASKA
01 09 23 (266) 02:21:28.036	59.200	-152.457	59.57		2.3	0.42	0.92	0.77	108.5	79	55.59	A	E	SOUTHERN ALASKA
01 09 23 (266) 02:35:27.041	61.181	-150.923	40.33		1.5	0.64	1.91	4.53	109.0	19	60.60	C	E	SOUTHERN ALASKA
01 09 23 (266) 04:21:33.657	55.026	-163.831	139.83		4.4	1.34	3.17	1.13	142.0	144	21.90	C	E	UNIMAK ISLAND REGION
01 09 23 (266) 11:09:25.267	62.624	-144.229	9.81		1.7	0.93	1.00	0.92	103.1	25	61.15	A	E	CENTRAL ALASKA
01 09 23 (266) 11:27:17.350	62.233	-149.213	18.56		1.9	0.65	1.26	6.62	49.3	35	53.37	D	E	CENTRAL ALASKA
01 09 23 (266) 11:29:17.230	62.868	-149.740	74.01		1.3	0.67	2.31	1.17	104.0	25	13.23	B	E	CENTRAL ALASKA
01 09 23 (266) 13:26:03.145	61.717	-150.893	48.35		1.5	0.53	2.64	2.27	83.0	27	54.04	B	E	SOUTHERN ALASKA
01 09 23 (266) 14:29:34.411	61.046	-151.162	5.13		1.6	1.16	1.18	1.21	73.0	30	33.91	A	E	SOUTHERN ALASKA
01 09 23 (266) 15:23:19.063	62.185	-149.287	5.51		1.2	0.77	1.41	0.88	101.0	19	49.59	B	E	CENTRAL ALASKA
01 09 23 (266) 16:36:05.908	59.950	-153.437	131.10		2.6	0.70	1.38	1.27	70.9	75	35.02	B	E	SOUTHERN ALASKA
01 09 23 (266) 16:44:40.124	61.701	-152.141	115.31		2.5	0.67	2.21	1.52	96.9	73	44.36	B	E	SOUTHERN ALASKA
01 09 23 (266) 18:06:28.043	60.144	-152.615	91.60		1.8	0.47	1.54	1.68	81.3	29	26.46	B	E	SOUTHERN ALASKA
01 09 23 (266) 18:37:11.208	60.815	-150.730	48.32		1.5	0.49	2.18	4.28	101.0	21	43.70	C	E	KENAI PENINSULA, ALASKA
01 09 23 (266) 18:52:38.628	60.286	-152.584	93.78		1.3	0.53	3.00	1.79	107.9	22	21.68	C	E	CENTRAL ALASKA
01 09 23 (266) 19:48:58.771	58.498	-154.150	85.72		2.7	0.48	1.33	1.54	99.7	47	15.79	B	E	ALASKA PENINSULA
01 09 23 (266) 20:12:34.585	61.282	-150.698	47.04		1.9	0.68	1.46	2.67	52.1	33	59.71	B	E	SOUTHERN ALASKA
01 09 23 (266) 21:09:39.195	58.397	-154.518	4.00		1.8	0.17	1.29	1.18	198.0	18	10.90	A	E	ALASKA PENINSULA
01 09 24 (267) 00:07:48.650	60.701	-150.537	54.25		1.4	0.56	1.90	1.48	103.3	19	27.13	B	E	KENAI PENINSULA, ALASKA
01 09 24 (267) 00:13:51.563	53.758	-164.153	33.06		2.7	0.52	6.68	942.80	231.8	24	94.73	D	E	UNIMAK ISLAND REGION
01 09 24 (267) 01:34:45.580	58.218	-152.890	42.85		2.2	0.47	1.64	2.87	125.9	44	51.70	C	E	KODIAK ISLAND REGION
01 09 24 (267) 03:37:55.612	64.434	-148.085	20.00G		1.0	0.61	0.86	0.00	115.5	15	4.11	A	E	CENTRAL ALASKA
01 09 24 (267) 10:40:12.100	61.588	-149.984	37.43		1.5	0.59	2.03	1.44	89.9	22	8.90	B	E	SOUTHERN ALASKA

01 09 24 (267) 14:02:40.122	60.355	-151.346	62.53	1.9	0.49	0.77	1.51	70.7	35	34.69	B	E	KENAI PENINSULA, ALASKA
01 09 24 (267) 15:18:46.251	61.514	-146.361	34.99	1.7	0.57	0.79	1.12	71.9	30	23.57	A	E	SOUTHERN ALASKA
01 09 24 (267) 16:17:43.603	61.587	-149.999	35.47	1.9	0.68	1.36	2.15	87.3	26	9.56	B	E	SOUTHERN ALASKA
01 09 24 (267) 21:40:37.780	59.971	-152.191	80.59	1.6	0.51	2.62	2.12	76.6	25	50.81	B	E	SOUTHERN ALASKA
01 09 24 (267) 22:41:26.227	57.376	-154.317	10.01	2.5	0.25	4.46	12.92	250.2	20	92.40	D	E	KODIAK ISLAND REGION
01 09 25 (268) 00:34:44.370	65.133	-148.581	1.00G	0.8	0.51	2.71	0.00	211.0	13	25.46	C	E	ALASKA
01 09 25 (268) 04:27:25.526	51.297	-177.602	26.06	2.6	0.47	1.88	7.67	328.0	26	57.60	D	E	ANDREANOF IS., ALEUTIAN IS.
01 09 25 (268) 04:34:38.047	61.397	-150.814	47.11	2.0	0.84	0.64	0.99	54.6	60	57.04	A	E	SOUTHERN ALASKA
01 09 25 (268) 05:26:23.469	63.109	-151.322	21.01	1.7	1.14	1.07	0.44	74.5	27	53.37	A	E	CENTRAL ALASKA
01 09 25 (268) 08:56:52.257	60.520	-142.972	10.29	1.6	0.51	1.69	0.89	130.9	14	27.35	B	E	SOUTHERN ALASKA
01 09 25 (268) 10:00:04.023	60.670	-152.513	104.14	1.5	0.51	2.44	2.48	60.0	26	12.23	B	E	SOUTHERN ALASKA
01 09 25 (268) 10:01:41.112	61.422	-151.673	78.47	0.9	0.78	2.18	1.46	168.0	14	25.80	B	E	SOUTHERN ALASKA
01 09 25 (268) 10:08:08.257	61.580	-150.494	59.61	2.1	0.60	0.44	0.61	54.8	77	33.47	A	E	SOUTHERN ALASKA
01 09 25 (268) 11:23:37.168	61.466	-149.819	30.41	2.3	0.71	0.34	0.33	41.5	81	20.79	A	E	SOUTHERN ALASKA
01 09 25 (268) 14:32:51.911	61.947	-147.953	41.12	1.2	0.54	0.94	0.58	97.8	22	25.24	A	E	SOUTHERN ALASKA
01 09 25 (268) 17:35:21.863	65.368	-149.968	16.30	1.1	0.84	5.28	2.24	179.0	16	51.93	C	E	ALASKA
01 09 25 (268) 17:52:41.010	65.242	-150.065	10.00G	1.0	1.02	1.91	0.00	170.0	15	39.25	B	E	ALASKA
01 09 25 (268) 18:11:31.063	61.185	-145.884	26.33	1.4	0.63	0.33	0.34	108.8	23	24.80	A	E	SOUTHERN ALASKA
01 09 25 (268) 19:05:50.395	60.297	-140.506	9.10	2.0	0.53	2.45	0.97	159.0	13	26.24	B	E	SOUTHEASTERN ALASKA
01 09 25 (268) 20:14:36.178	60.304	-140.649	17.72	2.1	1.00	0.49	0.28	134.0	22	31.69	A	E	SOUTHEASTERN ALASKA
01 09 25 (268) 20:14:38.671	66.347	-147.121	24.39	1.8	0.93	2.80	2.52	136.0	24	87.40	C	E	ALASKA
01 09 25 (268) 20:42:45.587	61.633	-147.514	24.20	1.3	0.66	0.85	1.24	81.0	19	24.24	A	E	SOUTHERN ALASKA
01 09 25 (268) 22:05:20.822	60.406	-147.757	-1.49	1.5	0.81	1.13	0.61	182.4	22	63.82	A	E	SOUTHERN ALASKA
01 09 25 (268) 23:26:32.197	58.098	-158.526	15.00G	4.0	1.14	2.51	0.00	149.0	86	127.20	B	E	BRISTOL BAY FELT IN DILLINGHAM.
01 09 25 (268) 23:41:48.423	60.311	-147.230	5.05	2.1	0.67	0.49	0.25	76.5	40	41.14	A	E	SOUTHERN ALASKA
01 09 26 (269) 00:17:45.072	60.177	-152.498	87.07	2.1	0.59	1.23	1.00	82.1	58	27.69	A	E	SOUTHERN ALASKA
01 09 26 (269) 04:02:15.586	61.512	-147.556	8.89	2.3	0.82	0.51	1.34	28.3	74	37.69	A	E	SOUTHERN ALASKA
01 09 26 (269) 04:16:28.632	61.618	-146.606	26.66	2.2	0.73	0.73	2.34	24.3	53	38.92	B	E	SOUTHERN ALASKA
01 09 26 (269) 04:23:00.418	61.532	-147.899	19.96	1.3	0.68	1.64	1.50	97.1	23	32.36	B	E	SOUTHERN ALASKA
01 09 26 (269) 04:55:50.727	59.610	-152.763	77.51	2.5	0.61	0.84	0.44	73.5	105	26.69	A	E	SOUTHERN ALASKA
01 09 26 (269) 05:32:39.271	53.123	-167.100	26.80	2.2	0.53	15.39	119.02	330.0	19	76.17	D	E	FOX ISLANDS, ALEUTIAN IS.
01 09 26 (269) 08:14:14.241	61.624	-150.668	-0.56	2.3	0.89	0.83	1.45	52.3	50	41.81	B	E	SOUTHERN ALASKA
01 09 26 (269) 08:42:30.015	63.045	-150.755	121.14	2.2	0.68	0.91	0.95	68.6	69	56.93	A	E	CENTRAL ALASKA
01 09 26 (269) 09:25:00.500	54.206	167.490	33.00D 4.0									R	KOMANDORSKY IS. REGION
01 09 26 (269) 10:26:55.730	61.049	-150.256	54.28	1.9	0.47	0.88	1.37	52.8	50	11.12	B	E	SOUTHERN ALASKA
01 09 26 (269) 11:22:29.149	61.800	-148.455	2.37	1.7	0.94	0.88	1.04	54.0	28	24.80	A	E	SOUTHERN ALASKA
01 09 26 (269) 12:15:31.018	59.946	-152.430	79.24	2.2	0.73	0.76	0.73	53.5	92	54.37	A	E	SOUTHERN ALASKA
01 09 26 (269) 13:51:54.959	61.303	-147.479	11.40	0.9	0.50	1.82	1.52	111.5	21	51.37	B	E	SOUTHERN ALASKA
01 09 26 (269) 18:47:16.041	59.842	-153.432	128.31	2.8	0.50	1.20	0.78	58.2	119	23.91	A	E	SOUTHERN ALASKA
01 09 26 (269) 23:53:38.092	61.620	-151.619	70.06	1.9	0.82	2.49	2.22	92.0	30	37.36	B	E	SOUTHERN ALASKA
01 09 27 (270) 01:17:31.701	56.846	-155.372	1.00G	3.0	0.77	4.05	0.00	211.0	55	134.21	C	E	ALASKA PENINSULA
01 09 27 (270) 01:47:05.668	59.903	-151.679	70.24	1.5	0.38	1.81	1.88	57.0	31	26.80	B	E	KENAI PENINSULA, ALASKA
01 09 27 (270) 03:36:30.550	51.371	-177.401	12.93	1.7	0.59	7.51	1.79	319.0	23	44.92	D	E	ANDREANOF IS., ALEUTIAN IS.
01 09 27 (270) 04:08:36.447	58.078	-158.464	12.44	3.9	0.61	5.46	5.50	149.0	64	124.53	D	E	BRISTOL BAY
01 09 27 (270) 05:11:24.562	59.307	-151.854	70.06	2.5	0.60	0.59	0.76	120.4	109	40.81	A	E	KENAI PENINSULA, ALASKA
01 09 27 (270) 05:18:21.233	54.578	-159.666	9.57	N/A	0.55	14.82	6.23	326.0	12	53.82	D	E	SOUTH OF ALASKA
01 09 27 (270) 07:27:26.154	61.270	-151.785	87.03	2.0	0.74	0.74	0.37	39.0	76	12.56	A	E	SOUTHERN ALASKA
01 09 27 (270) 09:54:24.611	62.938	-150.332	15.75	1.9	0.71	1.32	0.66	63.9	39	35.47	A	E	CENTRAL ALASKA
01 09 27 (270) 10:07:56.041	58.122	-158.756	38.21	2.7	0.89	9.26	27.18	205.0	31	132.54	D	E	BRISTOL BAY
01 09 27 (270) 10:40:03.200	51.067	179.573	33.00D 3.8									R	RAT ISLANDS, ALEUTIAN IS.
01 09 27 (270) 11:46:13.430	55.031	-161.552	72.46	N/A	0.43	3.61	2.64	195.0	16	23.68	C	E	ALASKA PENINSULA
01 09 27 (270) 15:22:34.124	62.017	-148.709	16.22	1.3	0.93	0.23	0.16	107.0	19	29.47	A	E	CENTRAL ALASKA
01 09 27 (270) 15:40:12.170	60.953	-150.323	55.66	2.0	0.65	0.53	1.25	45.6	69	25.02	A	E	KENAI PENINSULA, ALASKA
01 09 27 (270) 17:06:22.565	63.114	-150.776	120.78	2.0	0.50	2.07	2.52	106.7	40	49.37	B	E	CENTRAL ALASKA
01 09 27 (270) 17:50:25.409	60.916	-145.935	14.59	2.1	0.66	0.53	0.69	42.6	47	25.24	A	E	SOUTHERN ALASKA
01 09 27 (270) 18:02:42.840	58.993	-152.957	66.57	1.8	0.68	1.92	2.08	89.2	27	46.59	B	E	KODIAK ISLAND REGION
01 09 27 (270) 18:40:00.344	63.669	-149.339	109.64	1.9	0.61	1.31	0.95	61.6	41	21.13	A	E	CENTRAL ALASKA
01 09 27 (270) 21:38:51.746	55.299	-163.419	162.09	2.6	0.52	5.69	3.50	185.0	31	41.81	D	E	UNIMAK ISLAND REGION
01 09 27 (270) 21:43:00.856	61.461	-150.782	53.05	1.8	0.64	1.61	2.04	55.6	49	46.03	B	E	SOUTHERN ALASKA
01 09 27 (270) 21:51:22.356	61.024	-150.138	30.69	2.0	0.79	0.78	1.33	45.0	50	25.80	A	E	SOUTHERN ALASKA
01 09 27 (270) 22:47:26.859	60.417	-151.857	68.75	2.2	0.71	1.15	0.78	44.4	64	34.69	A	E	KENAI PENINSULA, ALASKA
01 09 28 (271) 00:35:54.138	57.525	-154.421	46.09	3.0	0.80	1.15	1.58	175.8	80	74.83	B	E	KODIAK ISLAND REGION
01 09 28 (271) 02:01:56.228	59.960	-153.057	103.37	2.4	0.75	1.04	1.15	63.4	92	0.67	A	E	SOUTHERN ALASKA
01 09 28 (271) 02:07:37.929	51.552	-175.350	12.61	2.1	0.47	7.60	6.99	319.0	17	62.38	D	E	ANDREANOF IS., ALEUTIAN IS.
01 09 28 (271) 03:54:24.258	63.252	-151.088	7.99	1.8	0.81	3.38	2.02	107.5	24	34.47	C	E	CENTRAL ALASKA
01 09 28 (271) 05:18:15.956	62.918	-151.115	122.09	2.0	0.49	1.36	2.11	69.0	38	71.27	B	E	CENTRAL ALASKA
01 09 28 (271) 05:47:21.565	62.203	-146.660	16.29	1.5	0.56	1.77	4.24	73.0	23	53.93	C	E	CENTRAL ALASKA

01 09 28 (271) 06:58:23.137	59.772	-153.480	124.67	2.1	0.36	1.63	0.84	124.4	29	19.35	B	E	SOUTHERN ALASKA
01 09 28 (271) 07:21:49.622	59.810	-153.067	104.65	2.3	0.72	1.40	0.80	57.3	85	16.46	B	E	SOUTHERN ALASKA
01 09 28 (271) 07:44:22.782	57.281	-142.925	10.00G	3.0	0.70	13.49	0.00	248.0	32	310.78	D	E	GULF OF ALASKA
01 09 28 (271) 07:56:08.783	61.522	-146.556	24.72	1.4	0.60	1.42	1.73	74.0	24	33.91	B	E	SOUTHERN ALASKA
01 09 28 (271) 09:40:29.610	61.382	-150.352	41.66	1.1	0.65	1.39	2.53	127.0	20	36.47	B	E	SOUTHERN ALASKA
01 09 28 (271) 11:11:08.390	61.052	-149.747	45.95	0.7	1.02	4.62	1.66	181.0	13	23.68	C	E	SOUTHERN ALASKA
01 09 28 (271) 11:31:58.632	59.833	-153.334	116.52	2.2	0.36	1.78	1.25	74.1	54	20.35	B	E	SOUTHERN ALASKA
01 09 28 (271) 12:54:42.434	56.852	-155.394	10.00G	2.3	0.98	4.26	0.00	212.1	34	133.65	C	E	ALASKA PENINSULA
01 09 28 (271) 13:49:52.962	59.815	-152.143	65.73	1.9	0.62	0.89	2.05	112.2	30	33.02	B	E	SOUTHERN ALASKA
01 09 28 (271) 15:03:52.195	53.485	-163.488	-1.00	3.4	0.51	4.42	4.49	238.2	40	130.09	C	E	UNIMAK ISLAND REGION
01 09 28 (271) 15:12:45.860	59.910	-152.692	79.84	2.9	0.94	0.68	0.52	56.1	147	21.57	A	E	SOUTHERN ALASKA
01 09 28 (271) 15:25:05.435	53.451	-163.401	59.88	2.8	0.62	1.95	3.41	240.2	32	134.65	C	E	UNIMAK ISLAND REGION
01 09 28 (271) 15:34:23.354	62.358	-151.466	88.13	2.1	0.97	1.25	1.88	59.0	54	61.93	B	E	CENTRAL ALASKA
01 09 28 (271) 15:47:02.795	60.655	-143.031	11.78	1.2	0.77	1.97	0.57	124.5	10	15.68	B	E	SOUTHERN ALASKA
01 09 28 (271) 16:23:03.013	60.285	-152.765	104.97	1.7	0.88	2.34	2.76	143.8	24	15.01	C	E	SOUTHERN ALASKA
01 09 28 (271) 16:43:27.447	66.252	-150.309	40.23	1.6	0.92	4.48	14189.64	159.0	17	137.21	D	E	ALASKA
01 09 28 (271) 17:46:06.357	59.597	-152.912	80.36	2.4	0.86	0.41	0.36	70.5	103	18.90	A	E	SOUTHERN ALASKA
01 09 28 (271) 18:58:01.574	54.241	-163.738	1.00G	2.1	1.05	1.36	0.00	213.5	18	45.03	B	E	UNIMAK ISLAND REGION
01 09 28 (271) 20:39:03.132	58.101	-158.542	15.25	2.6	0.77	8.08	8.22	199.0	27	127.65	D	E	BRISTOL BAY
01 09 28 (271) 21:20:00.804	60.621	-152.686	108.81	1.5	0.97	2.17	2.09	82.0	26	11.23	B	E	SOUTHERN ALASKA
01 09 28 (271) 21:34:29.924	54.619	-162.672	1.00G	2.4	1.07	2.88	0.00	193.5	41	46.70	C	E	ALASKA PENINSULA
01 09 28 (271) 22:25:27.783	63.369	-151.351	11.92	1.2	0.67	4.55	1.24	187.2	17	29.58	C	E	CENTRAL ALASKA
01 09 28 (271) 23:02:23.908	64.995	-147.372	-0.55	0.8	0.53	3.64	1.72	224.0	14	1.11	C	E	CENTRAL ALASKA
01 09 29 (272) 00:51:29.404	59.889	-151.832	43.46	2.5	0.87	0.65	1.35	35.7	77	27.69	B	E	KENAI PENINSULA, ALASKA
01 09 29 (272) 03:34:58.688	60.869	-149.073	27.79	2.7	0.64	0.70	1.43	93.2	86	45.03	B	E	KENAI PENINSULA, ALASKA
01 09 29 (272) 04:41:27.306	61.614	-150.925	56.60	1.6	0.83	1.40	1.95	59.0	40	55.37	B	E	SOUTHERN ALASKA
01 09 29 (272) 06:50:54.537	60.009	-152.681	91.31	2.6	0.60	0.97	0.60	54.1	112	46.03	A	E	SOUTHERN ALASKA
01 09 29 (272) 06:58:57.653	64.775	-148.180	19.73	1.1	0.55	1.67	0.92	61.0	15	19.01	B	E	CENTRAL ALASKA
01 09 29 (272) 06:59:13.864	64.783	-148.011	15.90	0.6	0.61	6.28	6.86	146.1	7	12.68	D	E	CENTRAL ALASKA
01 09 29 (272) 08:09:42.159	60.839	-147.149	23.58	2.2	0.65	0.75	0.59	59.9	62	5.45	A	E	SOUTHERN ALASKA
01 09 29 (272) 09:33:10.487	64.669	-149.252	16.33	1.4	0.83	1.45	1.07	86.6	22	13.12	B	E	CENTRAL ALASKA
01 09 29 (272) 13:02:50.986	61.578	-146.342	30.14	1.6	0.53	0.89	0.93	76.0	33	24.24	A	E	SOUTHERN ALASKA
01 09 29 (272) 14:22:17.807	59.797	-152.981	91.81	1.9	0.49	1.29	1.27	92.0	49	21.35	A	E	SOUTHERN ALASKA
01 09 29 (272) 14:31:10.066	61.014	-148.243	17.75	1.1	0.32	1.19	2.72	65.7	23	45.70	C	E	SOUTHERN ALASKA
01 09 29 (272) 15:17:11.376	66.333	-150.024	27.23	1.8	0.96	5.19	6.13	161.0	16	148.44	D	E	ALASKA
01 09 29 (272) 16:11:26.193	61.449	-152.133	108.47	1.8	0.60	2.65	1.83	147.9	32	5.11	B	E	SOUTHERN ALASKA
01 09 29 (272) 18:40:28.208	53.822	-163.912	26.33	2.3	0.26	4.27	7.56	229.2	30	84.62	D	E	UNIMAK ISLAND REGION
01 09 29 (272) 18:55:28.504	53.450	-166.730	71.05	3.1	0.29	6.56	2.03	290.5	33	39.47	D	E	FOX ISLANDS, ALEUTIAN IS.
01 09 29 (272) 20:57:21.383	58.344	-154.793	3.34	1.4	0.37	0.54	0.34	161.0	29	4.34	A	E	ALASKA PENINSULA
01 09 29 (272) 21:48:43.547	61.189	-150.437	59.36	1.3	0.44	3.55	3.09	139.0	17	14.23	C	E	SOUTHERN ALASKA
01 09 30 (273) 00:59:00.941	53.946	-165.251	57.07	5.0	1.26	0.72	0.21	196.8	116	39.92	A	E	FOX ISLANDS, ALEUTIAN IS.
01 09 30 (273) 04:19:11.107	59.766	-152.916	94.06	2.3	0.59	0.97	1.07	81.8	61	21.68	A	E	SOUTHERN ALASKA
01 09 30 (273) 06:39:11.180	60.519	-145.356	21.94	1.6	0.64	0.63	0.73	108.6	34	8.34	A	E	SOUTHERN ALASKA
01 09 30 (273) 06:43:31.951	53.819	-165.180	61.29	2.4	0.40	5.04	2.72	227.6	32	46.81	C	E	FOX ISLANDS, ALEUTIAN IS.
01 09 30 (273) 07:14:27.473	61.006	-150.100	36.14	2.8	0.77	0.13	0.17	36.3	96	25.91	A	E	SOUTHERN ALASKA
01 09 30 (273) 08:02:08.225	65.228	-148.543	19.90	0.7	0.77	4.73	0.54	223.0	11	33.36	C	E	ALASKA
01 09 30 (273) 10:52:43.107	62.938	-150.630	108.83	2.1	0.74	1.04	1.09	65.9	51	50.37	A	E	CENTRAL ALASKA
01 09 30 (273) 12:45:43.488	66.559	-149.053	5.00G	2.9	1.06	2.46	0.00	166.0	32	169.01	B	E	ALASKA
01 09 30 (273) 15:28:35.389	59.787	-152.930	93.81	2.2	0.65	0.82	0.85	60.3	85	20.46	A	E	SOUTHERN ALASKA
01 09 30 (273) 15:49:48.042	63.966	-150.114	10.11	1.9	0.98	1.89	1.43	103.1	24	39.03	B	E	CENTRAL ALASKA
01 09 30 (273) 15:54:58.922	53.902	-165.253	48.86	2.1	0.64	5.34	2.29	230.1	22	37.14	C	E	FOX ISLANDS, ALEUTIAN IS.
01 09 30 (273) 16:05:32.219	58.057	-156.188	5.89	1.1	0.33	13.20	1.38	301.0	15	29.13	D	E	ALASKA PENINSULA
01 09 30 (273) 16:34:19.597	54.780	-160.460	45.36	3.1	0.21	6.13	7.02	259.0	11	62.38	D	E	ALASKA PENINSULA
01 09 30 (273) 16:39:10.841	51.963	-175.913	87.77	2.5	0.23	14.39	2.42	273.0	22	2.78	D	E	ANDREANOF IS., ALEUTIAN IS.
01 09 30 (273) 16:47:38.683	64.495	-146.931	-0.25	0.2	0.21	5.53	298.65	178.8	6	9.90	D	E	CENTRAL ALASKA
01 09 30 (273) 16:52:57.466	64.805	-147.471	16.22	0.3	0.25	1.75	2.25	161.0	7	19.46	B	E	CENTRAL ALASKA
01 09 30 (273) 18:25:43.440	51.159	-178.262	33.00	4.6								R	ANDREANOF IS., ALEUTIAN IS.
01 09 30 (273) 20:45:32.894	59.648	-153.471	115.95	2.0	0.49	0.80	0.70	115.5	56	13.57	A	E	SOUTHERN ALASKA
01 09 30 (273) 22:57:25.814	59.960	-150.720	39.54	1.7	0.51	2.61	3.21	127.0	23	23.79	C	E	KENAI PENINSULA, ALASKA

APPENDIX 1.
Earthquakes with a magnitude of 4.0 and greater.
This listing is a subset of earthquakes from the complete monthly listing.

DATE	LAT	LON	DEPTH	MAG	RMS	SEH	SEZ	GAP	PHASES	MIN	Q	T	REGION
yy mo dy jday hh:mm:sec	DEG	DEG	km	mb ML	sec.	km	km	deg	P,S	DIS			
01 09 2 (245) 11:20:16.720	51.514	-173.641	33.00	4.4								R	ANDREANOF IS., ALEUTIAN IS.
01 09 5 (248) 01:06:38.400	51.243	-179.628	33.00	4.5								R	ANDREANOF IS., ALEUTIAN IS.
01 09 6 (249) 10:52:57.962	53.495	-165.737	23.18		4.5	0.89	1.69	0.97	203.4	52	63.82	B E	FOX ISLANDS, ALEUTIAN IS.
01 09 11 (254) 21:09:44.443	52.118	-168.950	19.02		4.1	1.18	5459.57	6502.79	351.0	16	231.61	D E	FOX ISLANDS, ALEUTIAN IS.
01 09 11 (254) 21:10:57.063	52.541	-169.235	21.62		4.6	1.33	137.69	244.39	351.0	19	208.04	D E	FOX ISLANDS, ALEUTIAN IS.
01 09 12 (255) 14:50:37.630	52.525	-169.303	33.00	5.1								R	FOX ISLANDS, ALEUTIAN IS.
01 09 12 (255) 15:10:03.400	52.391	174.051	33.00	4.4								R	NEAR ISLANDS, ALEUTIAN IS.
01 09 17 (260) 05:34:26.310	52.374	-169.101	33.00	4.4								R	FOX ISLANDS, ALEUTIAN IS.
01 09 19 (262) 17:22:30.650	51.120	179.277	33.00	4.4								R	RAT ISLANDS, ALEUTIAN IS.
01 09 21 (264) 23:56:39.770	51.899	-175.353	33.00	5.5								R	ANDREANOF IS., ALEUTIAN IS.
01 09 22 (265) 06:48:05.370	55.879	-154.531	33.00	4.9								R	SOUTH OF ALASKA
01 09 23 (266) 04:21:33.657	55.026	-163.831	139.83		4.4	1.34	3.17	1.13	142.0	144	21.90	C E	UNIMAK ISLAND REGION
01 09 25 (268) 23:26:32.197	58.098	-158.526	15.00	G	4.0	1.14	2.51	0.00	149.0	86	127.20	B E	BRISTOL BAY
01 09 26 (269) 09:25:00.500	54.206	167.490	33.00	D 4.0								R	KOMANDORSKY IS. REGION
01 09 30 (273) 00:59:00.941	53.946	-165.251	57.07		5.0	1.26	0.72	0.21	196.8	116	39.92	A E	FOX ISLANDS, ALEUTIAN IS.
01 09 30 (273) 18:25:43.440	51.159	-178.262	33.00	4.6								R	ANDREANOF IS., ALEUTIAN IS.

APPENDIX 2.
Known or suspected quarry blasts located by the AEIC.
This listing is a subset of earthquakes from the complete monthly listing.

DATE	LAT	LON	DEPTH	MAG	RMS	SEH	SEZ	GAP	PHASES	MIN	Q	T	REGION
yy mo dy jday hh:mm:sec	DEG	DEG	km mb	ML	sec.	km	km	deg	P,S	DIS			

no quarry blasts located this month

